

Job Opportunities Available at Kiptopeke State Park

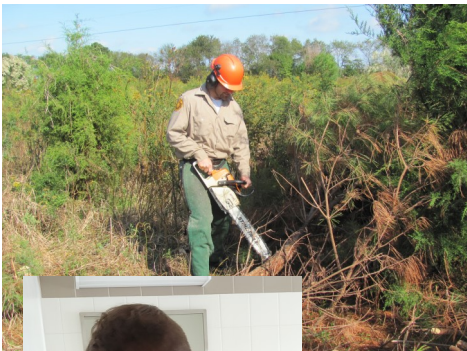
Park Interpreter (Education Specialist I): \$13/HR

Plan, research, and conduct environmental and historical education programs to the general public.



Contact Ranger (Admin & Office Specialist): \$12/HR

Provide optimal customer service at the park contact station, camp store and visitor center.



Maintenance Ranger (Trades Tech I): \$12/HR

Perform the recurring grounds care, maintenance, light construction, and cleaning tasks necessary to operate State Park facilities.



Housekeeping (Housekeeping Worker I): \$12/HR

Perform the recurring proper and prompt cleaning of cabins, restrooms, campground bathhouses, and other park structures.



Applications can be submitted in person at the park office or by scanning the QR code. Special Requirements: Must be able to work days, evenings, weekends and holidays. Employment is contingent upon satisfactory completion of a background check. Employer participates in e-Verify.