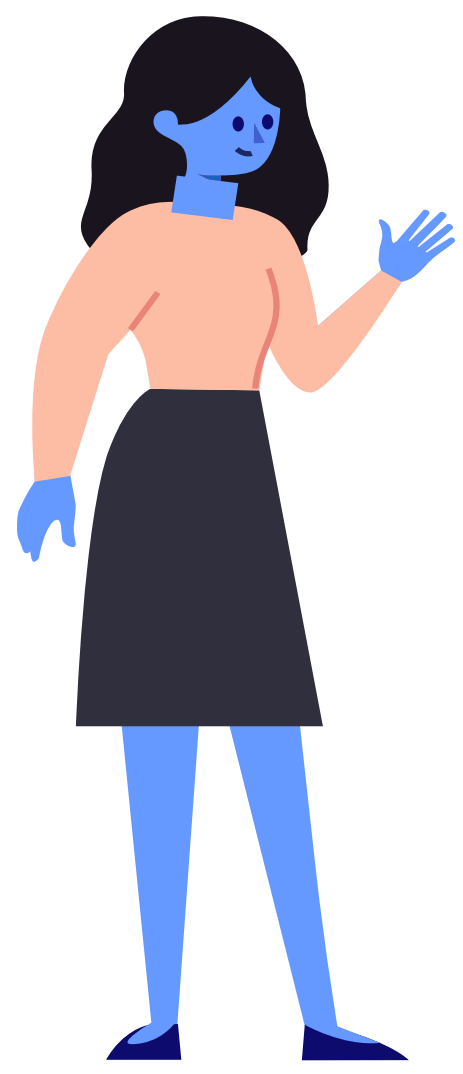
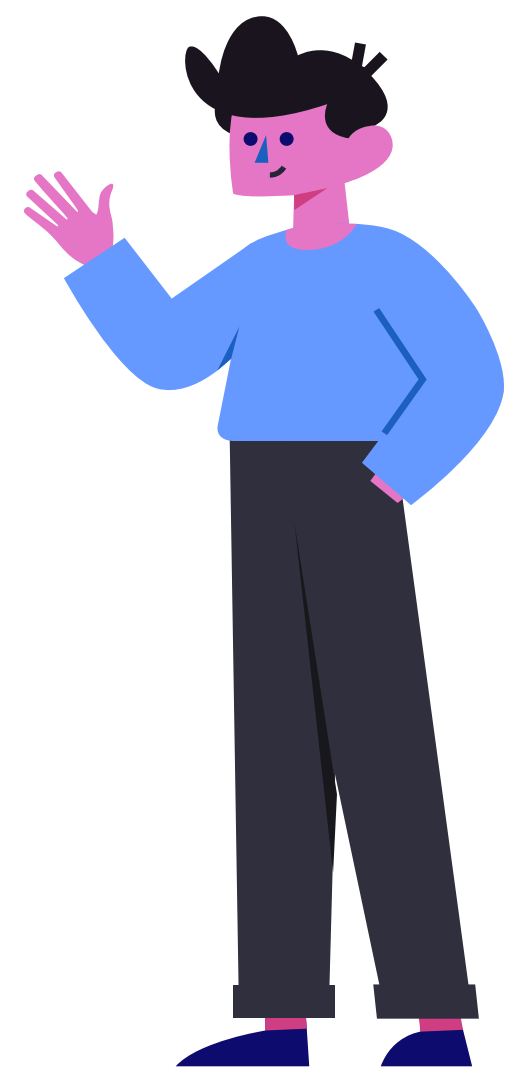


Navigate Study Buddies

NSB helps you connect with students in your classes who are interested in finding a study buddy or forming a study group



It's simple! Follow the steps below to start connecting with your classmates!



1

Start using Navigate

Download the Navigate Student app or sign in to your MyESCC account and select the Navigate Student tile

2

Select Study Buddies

On Navigate mobile, click the Study Buddies icon. On your desktop, select the Study Buddies tab on the left hand side.

3

Join a group

Once you've accessed Study Buddies, you'll see your available groups for the classes you're enrolled in. To join a group, select "yes" to confirm. You can join an existing group, or start a new one by being the first to join!

4

Check your email

After you're in a group, Navigate will email you the contact info for other students who have joined the same group. Now you can reach out and start studying together!