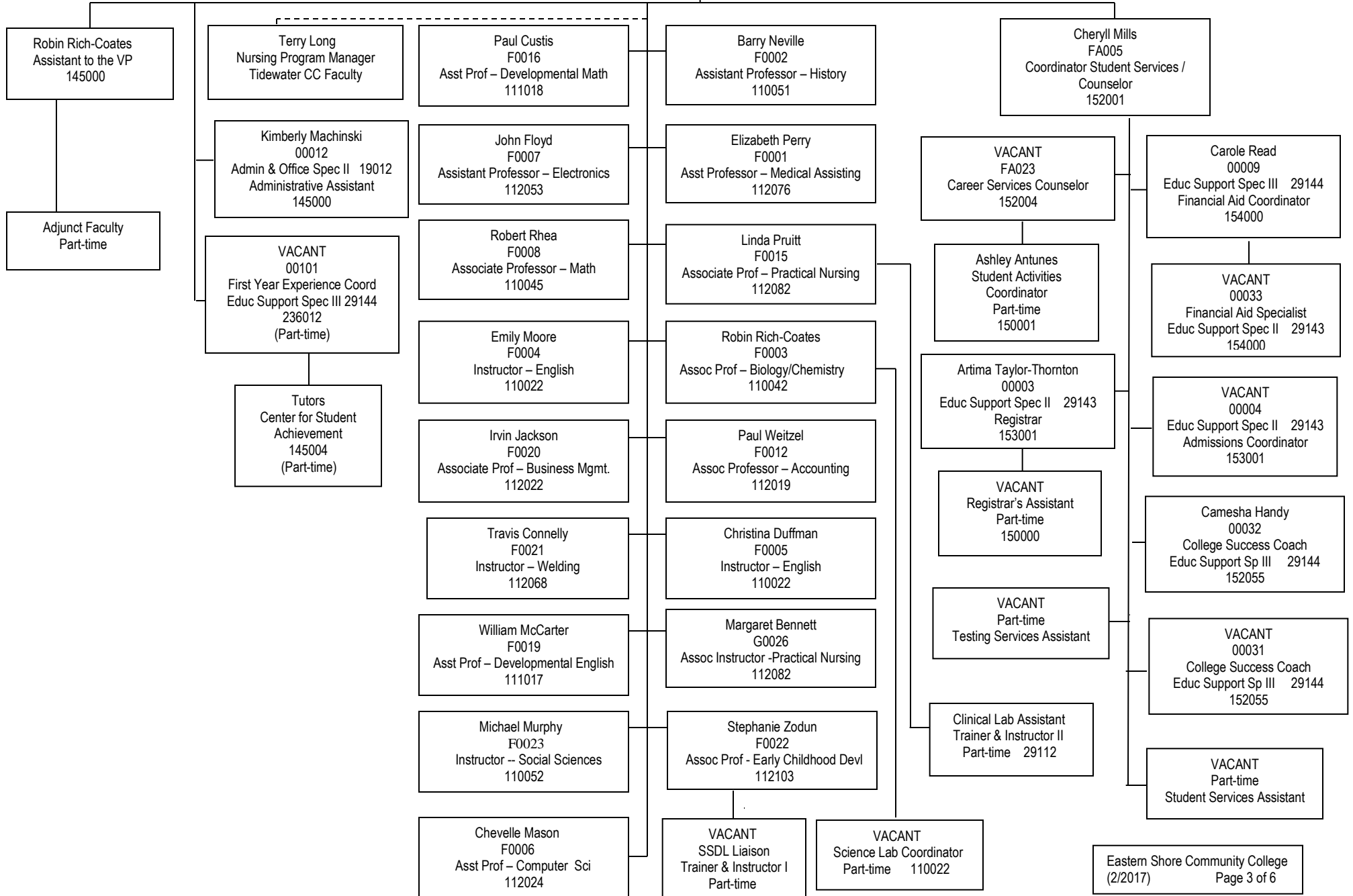


**Dr. Kimberly Britt
FA022
VP of Academic & Student Affairs
160025**



Dr. Kimberly Britt
FA022
VP of Academic & Student Affairs
160025

Cont'd

Teresa Guy
GA014
Career Pathways Program Coord
152004 – 55%
210146 – 45%

Ina Birch
Adult Career Coach
Ed Supp Sp III 29144
Part-time 210400

Faye Wilfong
High School Career Coach
Ed Supp Sp III 29144
Part-time 210140

Jennifer Cersley
Administrative Assistant
Admin & Off Spec III 19013
Part-time 152055

Barbara Rang
Career Pathways Adm Asst
Admin & Off Spec III 19013
Part-time 210149

Debbie Daniels
R0024
Experiential Learning/Job
Placement Coordinator
Educ Support Sp III 29144
236012

Lori Smith
R0025
High School Career Coach
Educ Support Sp III 29144

Suzanne Henderson
R0026
High School Career Coach
Educ Support Sp III 29144

Janet Justis
FA017
Dean of Learning Resources Center
(Equal Opportunity Officer)
145001

Charles Killmon
00017
Library Specialist II 29052
Media & Technical Services
142001 – 50%
162026 – 50%

Curtis Coates
Library Aide
Part-time
140000

Elizabeth Walraven
00025
Library Specialist I 29051
Public Services
140000

Vacant
FA004
Dean of
Workforce Development Services
115997

VACANT
GA022
WIOA Program Manager/ Case
Manager
218015

Tina Stratton-Taylor
R0022
Ed Support Sp III 29144
WIOA Case Manager/
Eligibility Specialist
218015

Kimberlee Ormsby
28400027
WDS Information Spec
Ed Supp Spec II 29143
115997

Sandra Williams
Events
Assistants
Part-time
(on-call)

Vacant
WDS Assistant
Part-time
115997

Vacant
WDS Assistant
Part-time
115997

Celeste Briones
WDS Assistant
Part-time
115997

CEU Lecturers
Part-time
(on-call)
115005

Amy Shockley
GA026
Regional Adult Education Program Manager
210152

Sharon Renner
R0023
Ed Supp Spec III 29144
Regional Spec/Lead Teacher,
Adult Ed 210152

ABE / GED / ESL
Instructors
Part-time
& Volunteers
210152

Sabine Lovett
R0014
Ed Supp Spec I 29142
Adult Ed Admin Assistant
210152

Eastern Shore Literacy Council
Independent, Co-located Partner
Collaborated Staff Assistance