

ESCC Fact Book

January 1

2017

A compilation of information about Eastern Shore Community College that includes institutional characteristics, trends in enrollment, graduate data, transfer data and other information that is deemed useful for planning.

**Resources/Information
for Planning**

Contents

GENERAL INFORMATION 3

Introduction 3

Mission, Goals, Vision and Values..... 3

The College..... 3

Accreditation..... 4

Service Region..... 5

Curriculum..... 6

Admission Requirements (General Admission)Curriculum 6

Student Enrollment..... 6

Graduates and Awards..... 17

GENERAL INFORMATION

Introduction

The purpose of this Fact Book is to provide accurate and timely information about Eastern Shore Community College (ESCC) institutional characteristics and trends in enrollment, graduation and transfer information, and other snapshots of information that are helpful and necessary for planning.

Mission, Goals, Vision and Values

A. ESCC Mission Statement

Eastern Shore Community College empowers learners to enhance the quality of life for themselves and their communities.

B. Our Vision:

To be an innovative, learning-centered community college recognized as a leader in education and as a vital link in the economic and cultural enrichment of our communities.

C. Our Values:

- We value:
- Lifelong Learners
- Positive Community Connections and Partnerships
- Innovative and Diverse Workforce
- Teaching and Learning Excellence
- Student and Employee Goal Attainment
- Quality Customer Service
- Positive Engagement with and Service to Employers

Approved by Eastern Shore Community College Board, July, 2015

The College

Eastern Shore Community College (ESCC) is a member of the Virginia Community College System (VCCS) and serves the residents of Accomack and Northampton Counties as a two-year institution of higher education. Originally a branch of the University of Virginia, the institution joined the Virginia Community College System in 1971. The college was accredited and granted membership in the Southern Association of College Schools Commission on Colleges (SACSCOC) in 1973 and moved to its current location in 1974.

ESCC operates under policies established by the State Board for Community Colleges and the Eastern Shore Community College Board, the college is financed primarily with state funds, supplemented by contributions from the two counties and the Eastern Shore Community College Foundation.

ESCC is situated on a 115-acre site on U.S. Route 13, south of Melfa, in Accomack County, Virginia. The facilities are accessible to the handicapped and include classrooms, laboratories, a bookstore, a lecture hall, administrative offices, a student lounge, and a Learning Resources Center/Library. The Business Development and Workforce Training Center opened in January, 2009 and houses Workforce Development Services including: occupational trade areas, allied health programs, industrial technology programs and employer training programs. The College is open year-round on a semester system. Classes are held from early morning through late evening, Monday – Saturday.

Accreditation

Eastern Shore Community College is accredited by the Southern Association of Colleges and Schools Commission on Colleges to award the associate degree. Contact the Commission on Colleges, 1866 Southern Lane, Decatur, GA 30033-4097 or call 404.679.4500 for questions about the accreditation of ESCC.

The associate degree curricula of the College have also been approved by the State Council of Higher Education for Virginia (SCHEV). The Associate of Applied Science Degree in Nursing Program, in cooperation with Tidewater Community College (TCC), is approved by the Virginia Board of Nursing, 9960 Mayland Drive, Suite 300, Richmond, VA 23233; phone 804.367.4515. TCC's Beazley School of Nursing has been awarded Conditional Accreditation by the Accreditation Commission for Education in Nursing (ACEN), 3343 Peachtree Road NE, Suite 850, Atlanta, GA 30326; phone 404.975.5000. The Practical Nursing certificate program and the Long-Term Care Assistant (LTCA) career studies certificate program have full approval from the Virginia Board of Nursing.

All degree and certificate programs offered at the College are approved by the State Department of Education for the payment of veterans' educational benefits.

Service Region

Eastern Shore Community College serves the residents of Accomack and Northampton Counties as a two-year institution of higher learning.

ESCC Service Area Demographics (*2010 Census data)

| | |
|---------------------------------------|---------|
| Population (2010 U.S. Census Bureau): | 45, 553 |
| Accomack County: | 33,164 |
| Northampton County: | 12,389 |

| | <u>Accomack County</u> | <u>Northampton County</u> |
|---------------------|------------------------|---------------------------|
| Female | 51% | 52% |
| Male | 49% | 48% |
| Black | 28% | 37% |
| Hispanic | 9% | 7% |
| White | 65% | 58% |
| High School Grad | 76% | 79% |
| Bachelor's Degree | 18% | 19% |
| Median Age | 39.9 years | 41.6 years |
| Per Capita Income | \$22,013 | \$21, 872 |
| Below Poverty Level | 18% | 21% |
| Unemployment Rate | 7.2% | 8.1% |

College Participation Rates by County

| Semester | Accomack County | Northampton County |
|-----------|-----------------|--------------------|
| Fall 2017 | Avail 12/2017 | |
| Fall 2016 | 547 (78%) | 135 (19%) |
| Fall 2015 | 572 (77%) | 152 (20%) |
| Fall 2014 | 615 (73%) | 189 (23%) |
| Fall 2013 | 596 (70%) | 219 (26%) |
| Fall 2012 | 1005 (73%) | 316 (23%) |
| Fall 2011 | 742 (73%) | 244 (24%) |
| Fall 2010 | 780 (74%) | 241 (23%) |
| Fall 2009 | 722 (73%) | 230 (23%) |
| Fall 2008 | 665 (70%) | 242 (26%) |
| Fall 2007 | 657 (72%) | 218 (24%) |
| Fall 2006 | 601 (72%) | 214 (26%) |
| Fall 2005 | 559 (73%) | 199 (26%) |

*students from outside of Accomack and Northampton Counties are not represented in the above table

Curriculum

Eastern Shore Community College offers associate degree programs, certificate programs and career study certificate programs. Currently, there are (5) associate of applied science degrees (AAS), (5) associate of arts and sciences degrees (AA&S), these degrees are commonly referred to as the “transfer degree” programs, (5) certificate programs and (9) career studies certificate programs (CSC) from which to choose a field of study. Additionally, high school students who are college-bound may enroll in selected courses for college credit; this category is known as dual enrollment.

In fall, 2016, there were 705 students enrolled at ESCC. Of that total, 269 were enrolled in transfer programs (AA&S), 73 were enrolled in Career and Technical programs (AAS), 86 students were enrolled in the certificate programs, and 24 in the career studies certificate programs (CSC). Additionally, there were 223 high school students (unduplicated) enrolled in the dual enrollment program. Not all ESCC students are enrolled in credentialed programs but rather for personal or professional enrichment; 253 students were enrolled as “unclassified” in fall, 2016.

Admission Requirements (General Admission)

Individuals are eligible for admission to ESCC if they are high school graduates or the equivalent (GED), or if they are eighteen years of age or older and able to benefit from study at the College. Information and specifics related to “curricular admission”, “non-curricular admission” and “admissions with special provisions” may be found in the ESCC Catalog & Student Handbook or online at www.es.vccs.edu.

Student Enrollment

Table 1.1

ANNUAL UNDUPLICATED HEADCOUNT and FTES

| Academic Year | Unduplicated Headcount | Annual FTES |
|---------------|------------------------|-------------|
| 2016-2017 | 929 | 382 |
| 2015-2016 | 987 | 417 |
| 2014-2015 | 1,131 | 489 |
| 2013-2014 | 1,142 | 511 |
| 2012-2013 | 1,338 | 591 |
| 2011-2012 | 1,381 | 640 |
| 2010-2011 | 1,461 | 688 |
| 2009-2010 | 1,446 | 662 |
| 2008-2009 | 1,332 | 577 |
| 2007-2008 | 1,215 | 542 |
| 2006-2007 | 1,106 | 486 |
| 2005-2006 | 1,103 | 444 |

ANNUAL STUDENT HEADCOUNT and FTES

Figure 1.1a

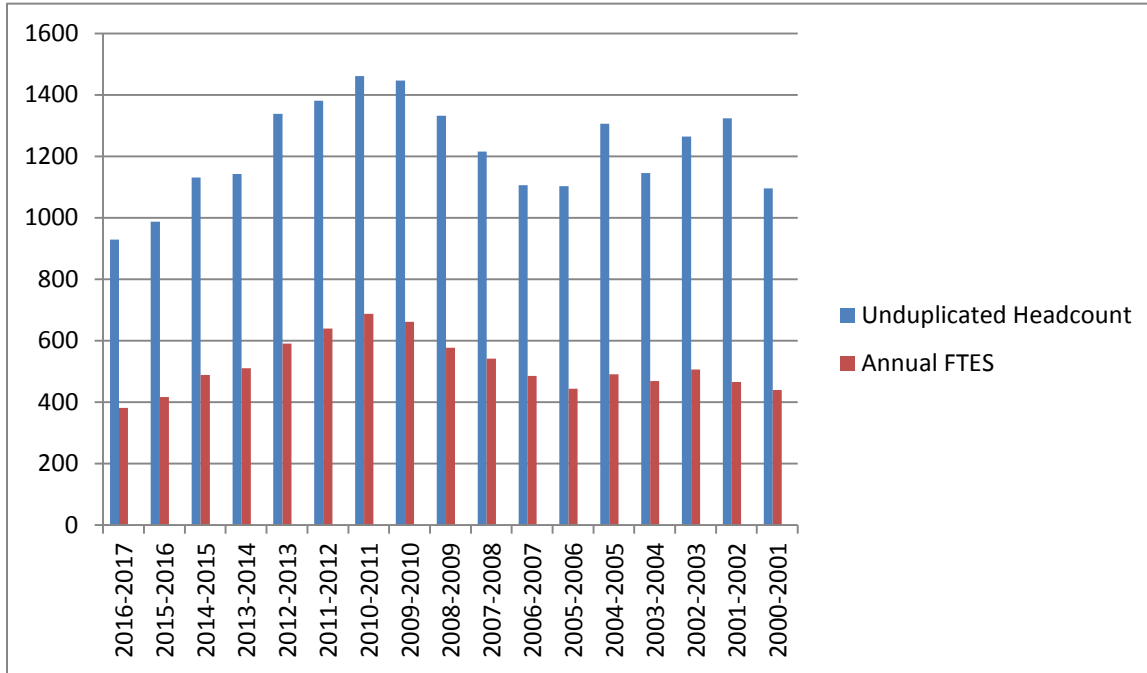


Figure 1.1b

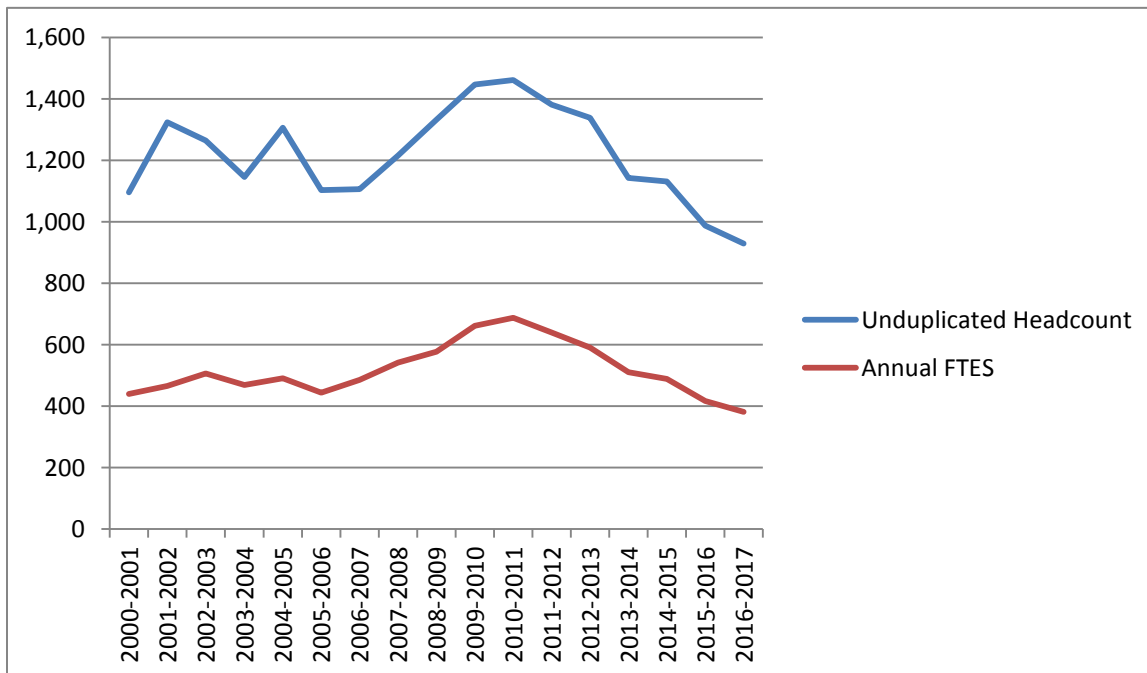


Table 1.2

STUDENT HEADCOUNT (HC) and FTEs (FTE) BY SEMESTER

| Year | SUMMER | | FALL | | SPRING | | ANNUAL TOTALS | |
|-----------|--------|-----|------|-----|--------|-----|---------------|-----|
| | HC | FTE | HC | FTE | HC | FTE | HC | FTE |
| 2016-2017 | 199 | 61 | 705 | 369 | 639 | 334 | 929 | 382 |
| 2015-2016 | 172 | 55 | 745 | 403 | 746 | 376 | 987 | 417 |
| 2014-2015 | 194 | 60 | 839 | 462 | 865 | 456 | 1131 | 489 |
| 2013-2014 | 232 | 70 | 857 | 486 | 852 | 466 | 1142 | 511 |
| 2012-2013 | 234 | 73 | 990 | 556 | 997 | 552 | 1338 | 591 |
| 2011-2012 | 292 | 101 | 1022 | 606 | 991 | 572 | 1381 | 640 |
| 2010-2011 | 326 | 116 | 1052 | 634 | 1071 | 625 | 1461 | 688 |
| 2009-2010 | 343 | 118 | 987 | 585 | 1056 | 621 | 1446 | 662 |
| 2008-2009 | 236 | 92 | 939 | 521 | 978 | 541 | 1332 | 577 |
| 2007-2008 | 275 | 59 | 907 | 347 | 862 | 485 | 1215 | 542 |
| 2006-2007 | 202 | 37 | 835 | 378 | 793 | 435 | 1106 | 486 |

** Because of rounding, not all tables add to 100%

Figure 1.2

STUDENT HEADCOUNT (HC) and FTEs (FTE) BY SEMESTER

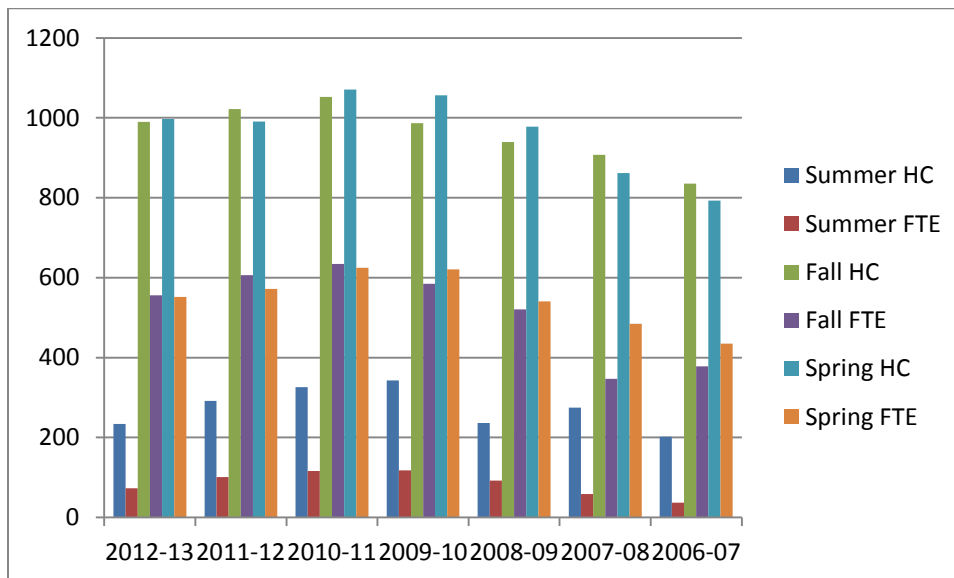


Table 1.3

AVERAGE CREDIT HOUR LOAD: FALL SEMESTERS

| CREDITS | HEADCOUNT | | | | | | | | | | Total | Average Credits |
|---------------|-----------|----|-----|----|------|----|-------|----|-------|---|-------|-----------------|
| | 1-4 | | 5-8 | | 9-11 | | 12-18 | | 19 &> | | | |
| TERM/SEMESTER | HC | % | HC | % | HC | % | HC | % | HC | % | | |
| Fall 2017 ** | | | | | | | | | | | | |
| Fall 2016 | 226 | 32 | 179 | 25 | 132 | 19 | 168 | 24 | 0 | 0 | 705 | 7.8 |
| Fall 2015 | 193 | 26 | 208 | 28 | 155 | 21 | 188 | 25 | 1 | 0 | 745 | 8.1 |
| Fall 2014 | 194 | 23 | 253 | 30 | 164 | 20 | 224 | 27 | 4 | 0 | 839 | 8.3 |
| Fall 2013 | 171 | 20 | 268 | 31 | 154 | 18 | 263 | 31 | 1 | 0 | 857 | 8.5 |
| Fall 2012 | 223 | 23 | 289 | 29 | 167 | 17 | 311 | 31 | 0 | 0 | 990 | 8.4 |
| Fall 2011 | 210 | 21 | 283 | 28 | 155 | 15 | 374 | 37 | 0 | 0 | 1022 | 8.9 |
| Fall 2010 | 233 | 22 | 269 | 26 | 148 | 14 | 399 | 38 | 3 | 0 | 1052 | 9.0 |
| Fall 2009 | 202 | 20 | 265 | 27 | 169 | 17 | 348 | 35 | 3 | 0 | 987 | 8.9 |
| Fall 2008 | 231 | 25 | 288 | 31 | 139 | 15 | 280 | 30 | 1 | 0 | 939 | 8.3 |

** Available 01/2018

Table 1.4

FULL-TIME and PART-TIME ANNUAL HEADCOUNT AND FTEs

| YEAR | Full-Time | | | | Part-Time | | | | Annual Totals | |
|---------|-----------|----|-----|----|-----------|----|-----|----|---------------|-----|
| | HC | % | FTE | % | HC | % | FTE | % | HC | FTE |
| 2017-18 | ** | | | | | | | | | |
| 2016-17 | 132 | 14 | 123 | 32 | 797 | 86 | 259 | 68 | 929 | 382 |
| 2015-16 | 139 | 14 | 129 | 31 | 848 | 86 | 287 | 69 | 987 | 417 |
| 2014-15 | 161 | 14 | 149 | 30 | 970 | 86 | 340 | 70 | 1131 | 489 |
| 2013-14 | 200 | 18 | 185 | 36 | 942 | 82 | 327 | 64 | 1142 | 511 |
| 2012-13 | 243 | 18 | 224 | 38 | 1095 | 82 | 367 | 62 | 1338 | 591 |
| 2011-12 | 300 | 21 | 281 | 44 | 1081 | 79 | 358 | 56 | 1381 | 640 |
| 2010-11 | 308 | 21 | 296 | 43 | 1153 | 79 | 398 | 57 | 1461 | 688 |
| 2009-10 | 314 | 22 | 296 | 45 | 1132 | 78 | 367 | 55 | 1446 | 662 |
| 2008-09 | 229 | 17 | 215 | 37 | 1103 | 83 | 362 | 63 | 1332 | 577 |
| 2007-08 | 232 | 19 | 220 | 41 | 983 | 81 | 322 | 59 | 1215 | 542 |

*Because of rounding, not all tables add to 100%

** Not available until 07/2018

Table 1.5

AGE DISTRIBUTION

| Age | 2016-2017 | | 2015-16 | | 2014-15 | | 2013-14 | | 2012-2013 | | 2011-2012 | | 2010-2011 | | 2009-2010 | |
|------------------------|-----------|----|---------|----|---------|----|---------|----|-----------|----|-----------|----|-----------|----|-----------|----|
| | HC | % | HC | % | HC | % | HC | % | HC | % | HC | % | HC | % | HC | % |
| <=17 | 220 | 24 | 196 | 20 | 243 | 21 | 188 | 16 | 207 | 15 | 196 | 14 | 233 | 16 | 205 | 14 |
| 18-19 | 210 | 23 | 245 | 25 | 270 | 24 | 243 | 21 | 277 | 21 | 293 | 21 | 308 | 21 | 313 | 22 |
| 20-21 | 134 | 14 | 118 | 12 | 138 | 12 | 148 | 13 | 169 | 13 | 185 | 13 | 183 | 13 | 194 | 13 |
| 22-24 | 71 | 8 | 93 | 9 | 117 | 10 | 136 | 12 | 153 | 11 | 156 | 11 | 148 | 10 | 162 | 11 |
| 25-29 | 94 | 10 | 105 | 11 | 112 | 10 | 134 | 12 | 132 | 10 | 168 | 12 | 159 | 11 | 162 | 11 |
| 30-34 | 42 | 5 | 46 | 5 | 71 | 6 | 85 | 7 | 103 | 8 | 99 | 7 | 109 | 7 | 103 | 7 |
| 35-39 | 35 | 4 | 47 | 5 | 52 | 5 | 59 | 5 | 68 | 5 | 85 | 6 | 99 | 7 | 87 | 6 |
| 40-49 | 66 | 7 | 66 | 7 | 67 | 6 | 88 | 7 | 118 | 9 | 108 | 8 | 117 | 8 | 125 | 9 |
| 50-64 | 48 | 5 | 64 | 6 | 54 | 5 | 55 | 5 | 103 | 8 | 84 | 6 | 97 | 7 | 91 | 6 |
| >=65 | 9 | 1 | 7 | 1 | 7 | .6 | 6 | .5 | 8 | 1 | 7 | 5 | 8 | 1 | 4 | 0 |
| Total Annual Headcount | 929 | | 987 | | 1131 | | 1142 | | 1338 | | 1381 | | 1461 | | 1446 | |

* Because of rounding, not all tables add to 100%

Table 1.6

GENDER DISTRIBUTION

| Gender | 2016-17 | | 2015-16 | | 2014-15 | | 2013-14 | | 2012-13 | | 2011-12 | | 2010-11 | | 2009-10 | |
|--------|---------|-----|---------|-----|---------|-----|---------|-----|---------|-----|---------|-----|---------|-----|---------|-----|
| | HC | % | HC | % | HC | % | HC | % | HC | % | HC | % | HC | % | HC | % |
| MALE | 339 | 36 | 373 | 38 | 412 | 36 | 375 | 33 | 409 | 31 | 427 | 31 | 454 | 31 | 453 | 31 |
| FEMALE | 590 | 64 | 614 | 62 | 719 | 64 | 767 | 67 | 929 | 69 | 954 | 69 | 1007 | 69 | 993 | 69 |
| Total | 929 | 100 | 987 | 100 | 1131 | 100 | 1142 | 100 | 1338 | 100 | 1381 | 100 | 1461 | 100 | 1446 | 100 |

* Because of rounding, not all tables add to 100%

Table 1.7

ETHNIC DISTRIBUTION (headcount)

| Race | 2016-17 | | 2015-16 | | 2014-15 | | 2013-14 | | 2012-13 | | 2011-12 | | 2010-11 | | 2009-10 | |
|--------------------|---------|-----|---------|-----|---------|-----|---------|-----|---------|-----|---------|-----|---------|------|---------|-----|
| | M | F | M | F | M | F | M | F | M | F | M | F | M | F | M | F |
| AmerNat | - | 1 | 3 | 2 | 1 | 3 | 1 | 3 | - | 1 | 2 | 4 | 1 | 7 | 1 | 3 |
| Asian | 9 | 8 | 8 | 8 | 10 | 11 | 5 | 11 | 10 | 9 | 6 | 9 | 3 | 10 | 7 | 15 |
| Black | 88 | 219 | 101 | 229 | 123 | 304 | 116 | 328 | 134 | 385 | 139 | 405 | 143 | 403 | 131 | 421 |
| Hispanic | 36 | 44 | 34 | 47 | 31 | 51 | 25 | 42 | 23 | 36 | 18 | 31 | 18 | 34 | 11 | 28 |
| White | 204 | 316 | 227 | 323 | 246 | 346 | 225 | 378 | 240 | 491 | 261 | 502 | 283 | 547 | 299 | 516 |
| Other/Unknown | 2 | 2 | - | 5 | 1 | 4 | 3 | 3 | 2 | 7 | 1 | 3 | 6 | 6 | 4 | 10 |
| Total (Gender) | 339 | 590 | 373 | 614 | 412 | 719 | 375 | 767 | 409 | 929 | 427 | 954 | 454 | 1007 | 453 | 993 |
| Annual Grand Total | 929 | | 987 | | 1131 | | 1142 | | 1338 | | 1381 | | 1461 | | 1446 | |

Table 1.8

STUDENT TYPE

| TYPE | Fall 2017 | Fall 2016 | Fall 2015 | Fall 2014 | Fall 2013 | Fall 2012 | Fall 2011 | Fall 2010 |
|-----------------------|-----------|-----------|-----------|-----------|-----------|-----------|-----------|-----------|
| Returning | | 443 | 542 | 562 | 626 | 681 | 721 | 705 |
| New | | 243 | 186 | 248 | 192 | 265 | 250 | 300 |
| Transfer | | 19 | 17 | 29 | 39 | 44 | 51 | 47 |
| First Time in College | | 136 | 131 | 146 | 157 | 167 | 205 | 195 |
| Military | | 50 | 68 | 79 | 77 | 84 | 25 | 29 |

Table 1.9

DUAL ENROLLMENT: FALL SEMESTER

| Fall 2017 | | Fall 2016 | | Fall 2015 | | Fall 2014 | | Fall 2013 | | Fall 2012 | | Fall 2011 | | Fall 2010 | |
|-----------|---|-----------|----|-----------|----|-----------|----|-----------|----|-----------|----|-----------|------|-----------|------|
| HC | % | HC | % | HC | % | HC | % | HC | % | HC | % | HC | % | HC | % |
| | | 223 | 32 | 203 | 27 | 225 | 27 | 168 | 20 | 197 | 27 | 162 | 15.9 | 218 | 20.7 |

HC=Head Count

% = percentage of total enrollment for fall semester (unduplicated)

Table 1.10

UNDUPLICATED DUAL ENROLLMENT BY HIGH SCHOOL: ANNUAL

| HIGH SCHOOL | 2016-17 | 2015-16 | 2014-15 | 2013-14 | 2012-13 | 2011-12 | 2010-11 | 2009-10 |
|------------------------------|---------|---------|---------|---------|---------|---------|---------|---------|
| Arcadia HS | 78 | 89 | 105 | 54 | 77 | 127 | 100 | 71 |
| Chincoteague HS | 29 | 11 | 18 | 5 | 23 | 5 | 42 | 3 |
| Nandua HS | 99 | 108 | 92 | 74 | 75 | 78 | 65 | 77 |
| Tangier Combined | 3 | 6 | - | 3 | - | 8 | 0 | 4 |
| Sub Total: ACCOMACK County | 209 | 214 | 215 | 136 | 175 | 218 | 207 | 152 |
| Northampton HS | 20 | 12 | 38 | 34 | 36 | 41 | 42 | 38 |
| Broadwater Academy (private) | 30 | 30 | 39 | 37 | 42 | 80 | 82 | 76 |
| GRAND TOTAL | 259 | 256 | 292 | 207 | 253 | 339 | 331 | 266 |

Table 1.11

FULL/PART TIME

| STATUS | Fall 2017 | | Fall 2016 | | Fall 2015 | | Fall 2014 | | Fall 2013 | | Fall 2012 | | Fall 2011 | | Fall 2010 | |
|-----------|-----------|-----|-----------|-----|-----------|-----|-----------|-----|-----------|-----|-----------|-----|-----------|-----|-----------|-----|
| | HC | FTE | HC | FTE | HC | FTE | HC | FTE | HC | FTE | HC | FTE | HC | FTE | HC | FTE |
| Full-Time | | | 168 | 155 | 189 | 170 | 228 | 205 | 264 | 235 | 311 | 272 | 374 | 336 | 402 | 365 |
| Part-Time | | | 537 | 214 | 556 | 232 | 611 | 257 | 593 | 251 | 679 | 284 | 648 | 270 | 650 | 269 |
| TOTAL | | | 705 | 369 | 745 | 402 | 839 | 462 | 857 | 486 | 990 | 556 | 1022 | 606 | 1052 | 634 |

| STATUS | Spring 2017 | | Spring 2016 | | Spring 2015 | | Spring 2014 | | Spring 2013 | | Spring 2012 | | Spring 2011 | | Spring 2010 | |
|-----------|-------------|-----|-------------|-----|-------------|-----|-------------|-----|-------------|-----|-------------|-----|-------------|------|-------------|-----|
| | HC | FTE | HC | FTE | HC | FTE | HC | FTE | HC | FTE | HC | FTE | HC | FTE | HC | FTE |
| Full-Time | 147 | 135 | 160 | 145 | 200 | 183 | 245 | 224 | 294 | 272 | 339 | 308 | 391 | 354 | 384 | 348 |
| Part-Time | 492 | 199 | 586 | 230 | 665 | 273 | 607 | 242 | 703 | 281 | 652 | 264 | 680 | 271 | 672 | 274 |
| TOTAL | 639 | 334 | 746 | 375 | 865 | 456 | 852 | 466 | 997 | 553 | 991 | 572 | 1071 | 1026 | 1056 | 622 |

Table 1.12

DAY (< 5pm)/EVENING (5pm = or >) STATUS

| STATUS | Fall 2017 | | Fall 2016 | | Fall 2015 | | Fall 2014 | | Fall 2013 | | Fall 2012 | | Fall 2011 | | Fall 2010 | |
|--------|-----------|---|-----------|----|-----------|-----|-----------|----|-----------|-----|-----------|------|-----------|------|-----------|------|
| | N | % | N | % | N | % | N | % | N | % | N | % | N | % | N | % |
| DAY | | | 611 | 87 | 713 | 96 | 782 | 94 | 823 | 96 | 950 | 96% | 974 | 95% | 970 | 92% |
| EVE. | | | 101 | 9 | 29 | 4 | 46 | 5 | 31 | 4 | 38 | 4% | 48 | 5% | 82 | 8% |
| TOTAL | | | 712 | 96 | 742 | 100 | 828 | 99 | 854 | 100 | 988 | 100% | 1022 | 100% | 1052 | 100% |

| STATUS | Spring 2017 | | Spring 2016 | | Spring 2015 | | Spring 2014 | | Spring 2013 | | Spring 2012 | | Spring 2011 | | Spring 2010 | |
|--------|-------------|----|-------------|----|-------------|-----|-------------|-----|-------------|------|-------------|------|-------------|------|-------------|------|
| | N | % | N | % | N | % | N | % | N | % | N | % | N | % | N | % |
| DAY | 559 | 87 | 624 | 84 | 841 | 97 | 823 | 97 | 964 | 97% | 930 | 94% | 1014 | 95% | 1001 | 95% |
| EVE. | 38 | 5 | 81 | 11 | 24 | 3 | 29 | 3 | 32 | 3% | 61 | 6% | 57 | 5% | 55 | 5% |
| TOTAL | 597 | 92 | 705 | 95 | 865 | 100 | 852 | 100 | 996 | 100% | 991 | 100% | 1071 | 100% | 1056 | 100% |

| STATUS | Summer 2017 | | Summer 2016 | | Summer 2015 | | Summer 2014 | | Summer 2013 | | Summer 2012 | | Summer 2011 | | Summer 2010 | |
|--------|-------------|---|-------------|----|-------------|------|-------------|------|-------------|------|-------------|------|-------------|------|-------------|------|
| | N | % | N | % | N | % | N | % | N | % | N | % | N | % | N | % |
| DAY | | | 128 | 64 | 152 | 88 | 172 | 89 | 196 | 84 | 201 | 86% | 250 | 86% | 275 | 84% |
| EVE. | | | 10 | 5 | 20 | 12 | 22 | 11 | 36 | 16 | 33 | 14% | 42 | 14% | 51 | 16% |
| TOTAL | | | 138 | 69 | 172 | 100% | 194 | 100% | 232 | 100% | 234 | 100% | 292 | 100% | 326 | 100% |

Table 1.13

ENROLLMENT BY PROGRAM TYPE: CURRICULUM ENROLLMENT

(Prior to AY 2008-2009, CSC were recorded in aggregate)

| Curriculum | Fall 2016 | | **Fall 2015 | | Fall 2014 | | Fall 2013 | | Fall 2012 | | Fall 2011 | | Fall 2010 | |
|-------------------------------------|------------|------------|-------------|------------|------------|------------|------------|------------|------------|------------|------------|------------|------------|------------|
| | HC | FTE | HC | FTE | HC | FTE | HC | FTE | HC | FTE | HC | FTE | HC | FTE |
| AA&S | | | | | | | | | | | | | | |
| Business Admin 216 | 28 | 17 | 33 | 23 | 44 | 31 | 43 | 29 | 40 | 28 | 60 | 38 | 45 | 35 |
| Education 624 | 24 | 16 | 21 | 14 | 32 | 21 | 29 | 18 | 40 | 25 | 40 | 28 | 36 | 27 |
| General Studies 697 | 70 | 43 | 67 | 46 | 84 | 52 | 99 | 60 | 118 | 72 | 132 | 82 | 154 | 104 |
| Liberal Arts 650 | 65 | 45 | 74 | 53 | 69 | 45 | 71 | 49 | 85 | 62 | 100 | 77 | 66 | 53 |
| Science 881 | 82 | 47 | 93 | 52 | 108 | 69 | 131 | 79 | 110 | 66 | 126 | 77 | 139 | 83 |
| Sub Total | 269 | 168 | 288 | 188 | 337 | 218 | 373 | 235 | 393 | 254 | 458 | 304 | 440 | 302 |
| AAS | | | | | | | | | | | | | | |
| Info. Systems Tech. - 200 | 2 | 1 | 2 | 1 | 6 | 2 | 6 | 3 | 4 | 2 | 7 | 5 | 3 | 1 |
| Management 212 | 26 | 13 | 29 | 15 | 32 | 18 | 40 | 25 | 33 | 21 | 34 | 22 | 42 | 29 |
| Management-IST 212-01 | - | - | - | - | See 212 | - | See 212 | - | - | - | See 212 | - | See 212 | See 212 |
| Early Childhood Ed 636 | 27 | 16 | 29 | 17 | 37 | 19 | 55 | 32 | 65 | 37 | 57 | 35 | 44 | 31 |
| Electronics Tech 981 | 20 | 14 | 23 | 15 | 21 | 14 | 18 | 12 | 33 | 20 | 26 | 18 | 22 | 17 |
| Electronics-Computers 981-01 | - | - | - | - | See 981 | - | See 981 | - | See 981 | - | See 981 | - | See 981 | - |
| Sub Total | 75 | 44 | 83 | 48 | 96 | 53 | 119 | 72 | 147 | 89 | 137 | 89 | 128 | 92 |

** Available 01/2016

| Curriculum | Fall 2016 | | Fall 2015 | | Fall 2014 | | Fall 2013 | | Fall 2012 | | Fall 2011 | | Fall 2010 | |
|--|-----------|------------|-----------|------------|------------|------------|------------|------------|------------|------------|------------|------------|------------|------------|
| | HC | FTE | HC | FTE | HC | FTE | HC | FTE | HC | FTE | HC | FTE | HC | FTE |
| CERTIFICATES | | | | | | | | | | | | | | |
| Electronics -925 | 1 | 0 | 2 | 1 | 5 | 4 | 4 | 3 | 2 | 1 | 1 | 0 | 3 | 2 |
| Industrial Main.Tech -990 | 11 | 7 | 12 | 7 | 16 | 11 | 16 | 12 | 16 | 11 | 10 | 8 | 8 | 5 |
| Information Systems Technology - 200 | | | | | | | | | | | | | | |
| Medical Assisting -166 | 33 | 24 | 34 | 26 | 30 | 18 | 34 | 18 | 51 | 32 | 45 | 31 | 61 | 42 |
| Practical Nursing -157 | 30 | 16 | 38 | 22 | 58 | 31 | 58 | 29 | 47 | 30 | 69 | 44 | 60 | 35 |
| Welding- 995 | 9 | 5 | 9 | 5 | 16 | 8 | 18 | 12 | 11 | 6 | 11 | 7 | 15 | 8 |
| Sub Total | 84 | 52 | 95 | 61 | 122 | 72 | 130 | 74 | 135 | 86 | 155 | 103 | 167 | 159 |
| CAREER STUDIES CERTIFICATES (CSC) | HC | FTE | HC | FTE | HC | FTE | HC | FTE | HC | FTE | HC | FTE | HC | FTE |
| Early Childhood Dev. 221-636-04 | - | - | - | - | 2 | 1 | - | - | 1 | 0 | 7 | 2 | 3 | 1 |
| Electricity 221-941-01 (new 2014) | 3 | 2 | - | - | 3 | 2 | - | - | - | - | - | - | - | - |
| HVAC 221-903-10 | 4 | 2 | 3 | 1 | 9 | 5 | 7 | 3 | 8 | 3 | 18 | 7 | 16 | 6 |
| Long-Term Care Assistant 221-157-01 | 7 | 4 | 11 | 5 | 16 | 7 | 13 | 4 | 12 | 5 | 15 | 6 | 10 | 4 |
| Med. Admin. Office Specialist 221-285-87 | 1 | 0 | - | - | - | - | 2 | 1 | 5 | 3 | 4 | 2 | - | - |
| Med. Code.&Bill Specialist 221-152-03 | 3 | 1 | 14 | 6 | 2 | 0 | 5 | 2 | 1 | 0 | 3 | 1 | 2 | 1 |
| Small Business Manage. 221-212-24 | 1 | 0 | 1 | 0 | 1 | 0 | 1 | 1 | 1 | 1 | 1 | 1 | 1 | 1 |
| Welding 221-995-01 | 3 | 1 | 4 | 2 | 4 | 2 | 10 | 6 | 8 | 4 | 4 | 3 | 3 | 1 |
| Sub Total | 23 | 10 | 33 | 14 | 37 | 18 | 39 | 18 | 40 | 19 | 54 | 24 | 38 | 15 |

Graduates and Awards

Table 2.1

Annual Number of ESCC Awards

| YEAR | AWARDS | DISTINCT GRADUATES |
|-----------|--------|--------------------|
| 2017-2018 | | |
| 2016-2017 | | |
| 2015-2016 | 114 | 103 |
| 2014-2015 | 133 | 110 |
| 2013-2014 | 148 | 116 |
| 2012-2013 | 182 | 148 |
| 2011-2012 | 203 | 167 |
| 2010-2011 | 157 | 136 |
| 2009-2010 | 144 | 136 |

Table 2.2

Distribution of Awards by Gender

| GENDER | 2017 | | 2016 | | 2015 | | 2014 | | 2013 | | 2012 | |
|--------------|------|---|------|----|------|----|------|----|------|----|------|----|
| | N | % | N | % | N | % | N | % | N | % | N | % |
| MALE | | | 45 | 39 | 35 | 26 | 45 | 30 | 38 | 21 | 60 | 30 |
| FEMALE | | | 69 | 61 | 98 | 74 | 103 | 70 | 144 | 79 | 143 | 70 |
| TOTAL | | | 114 | | 133 | | 148 | | 182 | | 203 | |

Table 2.3 Distribution of Awards by Ethnicity

| Ethnicity | 2015 | | 2014 | | 2013 | | 2012 | | 2011 | | 2010 | |
|---------------|------|----|------|----|------|----|------|----|------|----|------|----|
| | N | % | N | % | N | % | N | % | N | % | N | % |
| Am Indian | - | - | 2 | 1 | - | - | - | - | - | - | 2 | 1 |
| Asian | 1 | 1 | 1 | 1 | - | - | 3 | <1 | - | - | 1 | 1 |
| Black | 41 | 31 | 43 | 29 | 75 | 41 | 66 | 33 | 64 | 41 | 60 | 42 |
| Hispanic | 17 | 13 | 8 | 5 | 7 | 4 | 7 | 3 | 6 | 4 | 5 | 3 |
| White | 73 | 55 | 91 | 61 | 95 | 52 | 127 | 63 | 86 | 55 | 75 | 52 |
| Other | 1 | 1 | 3 | 3 | 3 | 2 | - | - | 1 | 1 | - | - |
| Not Specified | - | - | - | - | 2 | 1 | - | - | - | - | 1 | 1 |

Distribution of Awards by Age

Table 2.4 (age ranges beginning 2009)

| AGE | 2017 | | 2016 | | 2015 | | 2014 | | 2013 | | 2012 | |
|--------------|-------|---|-------|-----|-------|----|-------|------|-------|------|-------|-----|
| | Award | % | Award | % | Award | % | Award | % | Award | % | Award | % |
| 18-19 | | | 21 | 18 | 9 | 7 | 2 | 1.4 | 1 | .7 | 6 | 3 |
| 20-21 | | | 36 | 32 | 23 | 17 | 36 | 24 | 25 | 17 | 51 | 25 |
| 22-24 | | | 27 | 24 | 30 | 23 | 34 | 23 | 41 | 29 | 45 | 22 |
| 25-29 | | | 11 | 9 | 35 | 26 | 27 | 18 | 25 | 17 | 44 | 22 |
| 30-34 | | | 6 | 5 | 7 | 5 | 11 | 7 | 12 | 8 | 10 | 5 |
| 35-39 | | | 2 | 1.8 | 6 | 5 | 14 | 9 | 7 | 5 | 14 | 7 |
| 40-49 | | | 5 | 4.3 | 16 | 12 | 15 | 10 | 15 | 10 | 19 | 9 |
| 50-64 | | | 6 | 5 | 7 | 5 | 9 | 6 | 18 | 13 | 14 | 7 |
| >=65 | | | - | - | - | - | - | - | - | - | - | - |
| TOTAL | | | 114 | 99 | 133 | 97 | 148 | 98.4 | 144 | 99.7 | 203 | 100 |

* Because of rounding, not all tables add to 100%

AWARDS by CURRICULA

(Prior to AY 2008-2009, CSC were recorded in aggregate)

| AA&S (TRANSFER) | 2017 | 2016 | 2015 | 2014 | 2013 | 2012 | 2011 | 2010 |
|---|------|-----------|-----------|-----------|-----------|------------|-----------|-----------|
| Business Admin 216 | | 3 | 7 | 5 | 9 | 9 | 7 | 2 |
| Education 624 | | 1 | 9 | 4 | 6 | 2 | 4 | 7 |
| General Education 695 (NOT A PROGRAM; AWARD ONLY) | | 29 | 23 | 38 | 33 | 58 | 23 | - |
| General Studies 697 | | 6 | 14 | 9 | 17 | 13 | 24 | 21 |
| Gen.Studies Radiologic Tech MOU 697-09 | | - | 1 | 3 | 2 | 3 | 1 | - |
| Liberal Arts 650 | | 5 | 4 | 13 | 10 | 6 | 2 | - |
| Science 881 | | 3 | 6 | 8 | 3 | 12 | 12 | 5 |
| Sub Total | | 47 | 64 | 80 | 80 | 103 | 73 | 35 |

| AAS (CAREER/TECH) | 2017 | 2016 | 2015 | 2014 | 2013 | 2012 | 2011 | 2010 |
|--|-------------|-------------|-------------|-------------|-------------|-------------|-------------|-------------|
| Admin Support Technology 298 (discontinued 2014) | | - | 3 | 3 | 7 | 6 | 3 | 5 |
| Management 212 | | 3 | 3 | 2 | 5 | 4 | 2 | 2 |
| Management-IST 212-01 | | - | 2 | - | 2 | 2 | 5 | 5 |
| Early Childhood Dev. 636 | | 6 | 11 | 10 | 9 | 8 | 3 | 6 |
| Electronics Tech 981 | | 3 | 5 | 2 | 7 | 5 | 3 | 8 |
| Electronics- Computers 981-01 | | 3 | 2 | 2 | 1 | 1 | 2 | 1 |
| <u>Sub Total</u> | | 15 | 26 | 19 | 31 | 26 | 18 | 27 |

| CERTIFICATES | 2017 | 2016 | 2015 | 2014 | 2013 | 2012 | 2011 | 2010 |
|--|-------------|-------------|-------------|-------------|-------------|-------------|-------------|-------------|
| Info. Systems Tech. - 200 | | - | - | 1 | 2 | 1 | 1 | 2 |
| CADD 727 (discontinued, 2013) | | 0 | - | 5 | 1 | 5 | 2 | 5 |
| Clerical Studies 218 (discontinued, 2013) | | 1 | 2 | - | - | 1 | - | 1 |
| Electronics - 925 | | 1 | | - | 2 | - | 4 | - |
| Industrial Main.Tech - 990 | | 5 | 2 | 2 | - | - | - | - |
| Information Systems Technology - 200 | | | | | | | | |
| Medical Assisting - 166 | | - | 11 | 12 | 8 | 8 | 7 | 8 |
| Practical Nursing - 157 | | 1 | 13 | 11 | 16 | 14 | 15 | 25 |
| Welding- 995 | | 2 | - | 2 | 2 | 4 | 1 | 1 |
| <u>Sub Total</u> | | 10 | 28 | 33 | 31 | 33 | 30 | 42 |

| CAREER STUDIES CERTIFICATES (CSC) | 2017 | 2016 | 2015 | 2014 | 2013 | 2012 | 2011 | 2010 |
|--|------|-----------|-----------|-----------|-----------|-----------|-----------|-----------|
| Banking 221-212-02 (discontinued, 2012) | - | - | - | - | - | - | - | 3 |
| CADD 221-729-01 | | - | - | 1 | - | - | 1 | - |
| Early Childhood Dev. 221-636-04 | | - | 1 | 1 | 1 | 5 | 1 | 2 |
| HVAC 221-903-10 | | 1 | 3 | 4 | 9 | 7 | 9 | 8 |
| Long-Term Care Assistant 221-157-01 | | 27 | 6 | 1 | 11 | 12 | 6 | 7 |
| Med. Admin. Office Specialist 221-285-87 | | - | 1 | 3 | 13 | 7 | 2 | 4 |
| Med. Code.&Bill Specialist 221-152-03 | | - | 4 | 4 | 3 | 4 | 4 | 5 |
| Small Business Manage. 221-212-24 | | 1 | - | 1 | - | 2 | 1 | 1 |
| System Development 221-732-02 | | 1 | - | - | - | - | - | - |
| Welding 221-995-01 | | 1 | - | 1 | 3 | 4 | 5 | 10 |
| Sub Total | | 31 | 15 | 16 | 40 | 41 | 29 | 40 |

The ESCC Fact Book is a work in progress; this is version 1.3.2017. In the coming months look for updated versions of this document on the ESCC web site or contact the Office of Research, Planning and Assessment at ESCC for additional information:

Judith M Grier
 Coordinator of Research, Planning and Assessment
 Eastern Shore Community College (ESCC)
 29300 Lankford Highway
 Melfa, VA 23410
 757.789.1753
jgrier@es.vccs.edu

