

ESCC Fact Book

July 1

2015

A compilation of information about Eastern Shore Community College that includes institutional characteristics, trends in enrollment, graduate data, transfer data and other information that is deemed useful for planning.

**Resources/Information
for Planning**

Contents

GENERAL INFORMATION 3

Introduction 3

Mission, Goals, Vision and Values..... 3

The College..... 3

Accreditation..... 4

Service Region..... 4

Curriculum..... 5

Admission Requirements (General Admission)Curriculum 5

Student Enrollment..... 6

Graduates and Awards..... 156

GENERAL INFORMATION

Introduction

The purpose of this Fact Book is to provide accurate and timely information about Eastern Shore Community College (ESCC) institutional characteristics and trends in enrollment, graduation and transfer information, and other snapshots of information that are helpful and necessary for planning.

Mission, Goals, Vision and Values

A. ESCC Mission Statement

Eastern Shore Community College empowers learners to enhance the quality of life for themselves and their communities.

B. Our Vision:

To be an innovative, learning-centered community college recognized as a leader in education and as a vital link in the economic and cultural enrichment of our communities.

C. Our Values:

- We value:
- Lifelong Learners
- Positive Community Connections and Partnerships
- Innovative and Diverse Workforce
- Teaching and Learning Excellence
- Student and Employee Goal Attainment
- Quality Customer Service
- Positive Engagement with and Service to Employers

Approved by Eastern Shore Community College Board, July, 2015

The College

Eastern Shore Community College (ESCC) is a member of the Virginia Community College System (VCCS) and serves the residents of Accomack and Northampton Counties as a two-year institution of higher education. Operating under policies established by the State Board for Community Colleges and the Eastern Shore Community College Board, the college is financed primarily with state funds, supplemented by contributions from the two counties and the Eastern Shore Community College Foundation.

ESCC is situated on a 115-acre site on U.S. Route 13, south of Melfa, in Accomack County, Virginia. The facilities are accessible to the handicapped and include classrooms, laboratories, a bookstore, a lecture hall, administrative offices, a student lounge, and a Learning Resources Center/Library. The Business Development and Workforce Training Center opened in January, 2009 and houses Workforce Development Services including: occupational trade areas, allied health programs, industrial technology

programs and employer training programs. The College is open year-round on a semester system. Classes are held from early morning through late evening, Monday – Saturday.

Accreditation

Eastern Shore Community College is accredited by the Southern Association of Colleges and Schools Commission on Colleges to award the associate degree. Contact the Commission on Colleges (1866 Southern Lane, Decatur, GA 30033-4097 or call 404.679.4500) for questions about the accreditation of ESCC.

The associate degree curricula of the College have also been approved by the State Council of Higher Education for Virginia. The Registered Nursing Program (in cooperation with Tidewater Community College) is fully accredited by the National League of Nursing and approved by the Virginia Board of Nursing. The National League for Nursing Accreditation Commission (350 Hudson Street, New York, NY; 800.669.1656) may be used as a resource for program information. The Practical Nursing certificate program and the Long-Term Care Assistant (LTCA) career studies certificate program are accredited by the Virginia Board of Nursing.

All degree and certificate programs offered at the College are approved by the State Department of Education for the payment of veterans’ educational benefits.

Service Region

Eastern Shore Community College serves the residents of Accomack and Northampton Counties as a two-year institution of higher learning.

ESCC Service Area Demographics (*2010 Census data)

Population (2010 U.S. Census Bureau): 45, 553
 Accomack County: 33,164
 Northampton County: 12,389

	<u>Accomack County</u>	<u>Northampton County</u>
Female	51%	52%
Male	49%	48%
Black	28%	37%
Hispanic	9%	7%
White	65%	58%
High School Grad	76%	79%

Bachelor’s Degree	18%	19%
Median Age	39.9 years	41.6 years
Per Capita Income	\$22,013	\$21, 872
Below Poverty Level	18%	21%
Unemployment Rate	7.2%	8.1%

College Participation Rates by County

Semester	Accomack County	Northampton County
Fall 2015	TBA 12/2015	
Fall 2014	615 (73%)	189 (23%)
Fall 2013	596 (70%)	219 (26%)
Fall 2012	1005 (73%)	316 (23%)
Fall 2011	742 (73%)	244 (24%)
Fall 2010	780 (74%)	241 (23%)
Fall 2009	722 (73%)	230 (23%)
Fall 2008	665 (70%)	242 (26%)
Fall 2007	657 (72%)	218 (24%)
Fall 2006	601 (72%)	214 (26%)
Fall 2005	559 (73%)	199 (26%)

*students from outside of Accomack and Northampton Counties are not represented in the above table

Curriculum

Eastern Shore Community College offers associate degree programs, certificate programs and career study certificate programs. Currently, there are (6) associate of applied science degrees (AAS), (5) associate of arts and sciences degrees (AA&S), these degrees are commonly referred to as the “transfer degree” programs, (6) certificate programs and (10) career studies certificate programs (CSC) from which to choose a field of study. Additionally, high school students who are college-bound may enroll in selected courses for college credit; this category is known as dual enrollment.

In fall, 2014, there were 839 students enrolled at ESCC. Of that total, 337 were enrolled in transfer programs (AA&S), 245 were enrolled in Career and Technical programs (AAS), 118 students were enrolled in the certificate programs, and 37 in the career studies certificate programs (CSC). Additionally, there were 225 high school students (unduplicated) enrolled in the dual enrollment program. Not all ESCC students are enrolled in credentialed programs but rather for personal or professional enrichment; 257 students were enrolled as “unclassified” in fall, 2014.

Admission Requirements (General Admission)

Individuals are eligible for admission to ESCC if they are high school graduates or the equivalent (GED), or if they are eighteen years of age or older and able to benefit from study at the College. Information and specifics related to “curricular admission”, “non-curricular admission” and “admissions with special provisions” may be found in the ESCC Catalog & Student Handbook or online at www.es.vccs.edu.

Student Enrollment

Table 1.1

ANNUAL UNDUPLICATED HEADCOUNT and FTES

Academic Year	Unduplicated Headcount	Annual FTES
2015-2016	TBA 6/2016	
2014-2015	1,131	489
2013-2014	1,142	511
2012-2013	1,338	591
2011-2012	1,381	640
2010-2011	1,461	688
2009-2010	1,446	662
2008-2009	1,332	577
2007-2008	1,215	542
2006-2007	1,106	486
2005-2006	1,103	444

ANNUAL STUDENT HEADCOUNT and FTES

Figure 1.1a

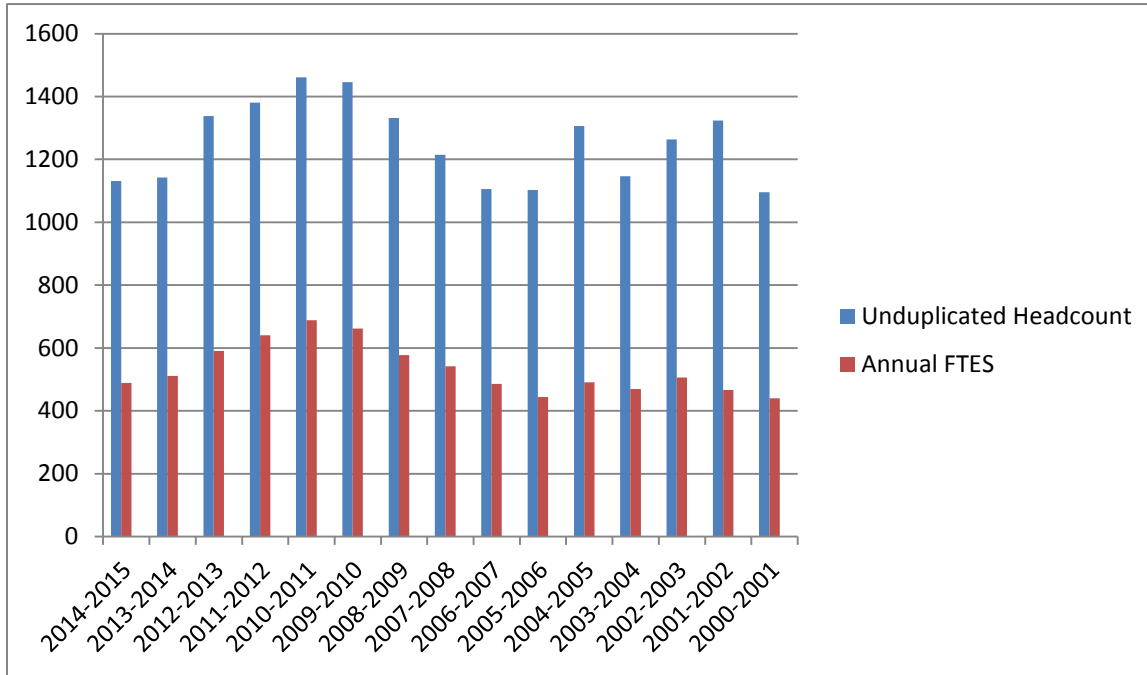


Figure 1.1b

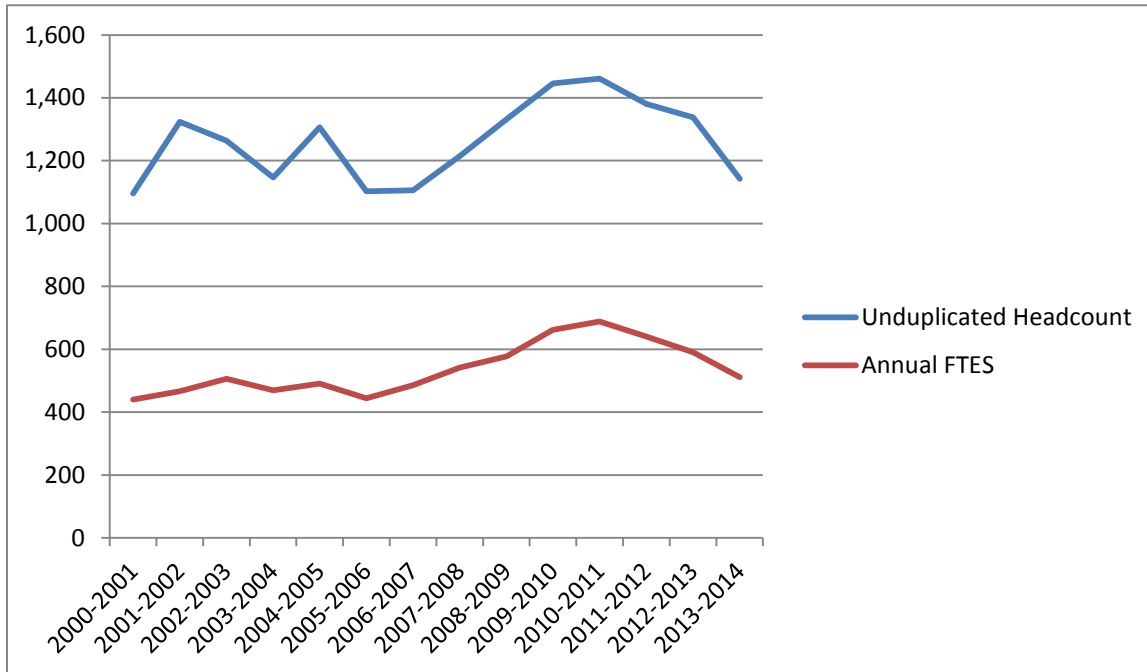


Table 1.2

STUDENT HEADCOUNT (HC) and FTEs (FTE) BY SEMESTER

Year	SUMMER		FALL		SPRING		ANNUAL TOTALS	
	HC	FTE	HC	FTE	HC	FTE	HC	FTE
2015-2016	172	55	*	*	*	*	*	*
2014-2015	194	60	839	462	865	456	1131	489
2013-2014	232	70	857	486	852	466	1142	511
2012-2013	234	73	990	556	997	552	1338	591
2011-2012	292	101	1022	606	991	572	1381	640
2010-2011	326	116	1052	634	1071	625	1461	688
2009-2010	343	118	987	585	1056	621	1446	662
2008-2009	236	92	939	521	978	541	1332	577
2007-2008	275	59	907	347	862	485	1215	542
2006-2007	202	37	835	378	793	435	1106	486

*Not yet available, TBA: 06/2016

** Because of rounding, not all tables add to 100%

Figure 1.2

STUDENT HEADCOUNT (HC) and FTEs (FTE) BY SEMESTER

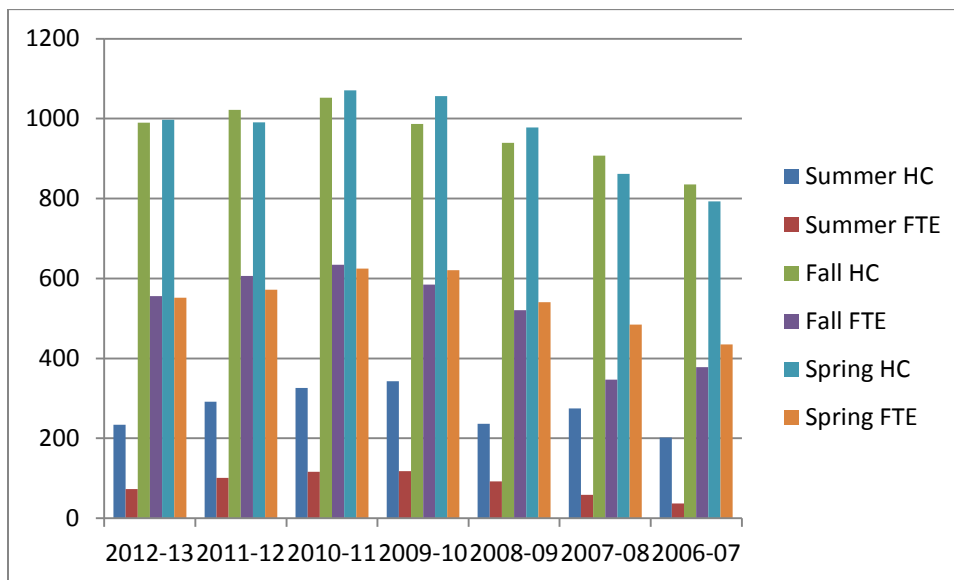


Table 1.3

AVERAGE CREDIT HOUR LOAD: FALL SEMESTERS

CREDITS	HEADCOUNT										Total	Average Credits
	1-4		5-8		9-11		12-18		19 &>			
TERM/SEMESTER	HC	%	HC	%	HC	%	HC	%	HC	%		
Fall 2015 **												
Fall 2014	194	23	253	30	164	20	224	27	4	0	839	8.3
Fall 2013	171	20	268	31	154	18	263	31	1	0	857	8.5
Fall 2012	223	23	289	29	167	17	311	31	0	0	990	8.4
Fall 2011	210	21	283	28	155	15	374	37	0	0	1022	8.9
Fall 2010	233	22	269	26	148	14	399	38	3	0	1052	9.0
Fall 2009	202	20	265	27	169	17	348	35	3	0	987	8.9
Fall 2008	231	25	288	31	139	15	280	30	1	0	939	8.3

** Available 01/2016

Table 1.4

FULL-TIME and PART-TIME ANNUAL HEADCOUNT AND FTEs

YEAR	Full-Time				Part-Time				Annual Totals	
	HC	%	FTE	%	HC	%	FTE	%	HC	FTE
2015-16	**	**	**	**	**	**	**	**	**	**
2014-15	161	14	149	30	970	86	340	70	1131	489
2013-14	200	18	185	36	942	82	327	64	1142	511
2012-13	243	18	224	38	1095	82	367	62	1338	591
2011-12	300	21	281	44	1081	79	358	56	1381	640
2010-11	308	21	296	43	1153	79	398	57	1461	688
2009-10	314	22	296	45	1132	78	367	55	1446	662
2008-09	229	17	215	37	1103	83	362	63	1332	577
2007-08	232	19	220	41	983	81	322	59	1215	542

*Because of rounding, not all tables add to 100%

** Not available until 07/2016

Table 1.5

AGE DISTRIBUTION

Age	2015-16		2014-15		2013-14		2012-2013		2011-2012		2010-2011		2009-2010	
	**HC	%	HC	%	HC	%	HC	%	HC	%	HC	%	HC	%
<=17			243	21	188	16	207	15	196	14	233	16	205	14
18-19			270	24	243	21	277	21	293	21	308	21	313	22
20-21			138	12	148	13	169	13	185	13	183	13	194	13
22-24			117	10	136	12	153	11	156	11	148	10	162	11
25-29			112	10	134	12	132	10	168	12	159	11	162	11
30-34			71	6	85	7	103	8	99	7	109	7	103	7
35-39			52	5	59	5	68	5	85	6	99	7	87	6
40-49			67	6	88	7	118	9	108	8	117	8	125	9
50-64			54	5	55	5	103	8	84	6	97	7	91	6
>=65			7	.6	6	.5	8	1	7	5	8	1	4	0
Total Annual Headcount			1131		1142		1338		1381		1461		1446	

* Because of rounding, not all tables add to 100%

** Not available until 07/2016

Table 1.6

GENDER DISTRIBUTION

Gender	2015-16		2014-15		2013-14		2012-13		2011-12		2010-11		2009-10	
	**HC	%	HC	%	HC	%	HC	%	HC	%	HC	%	HC	%
MALE			412	36	375	33	409	31	427	31	454	31	453	31
FEMALE			719	64	767	67	929	69	954	69	1007	69	993	69
Total			1131	100	1142	100	1338	100	1381	100	1461	100	1446	100

* Because of rounding, not all tables add to 100%

** Not available until 07/2016

Table 1.7

ETHNIC DISTRIBUTION (headcount)

Race	2015-16**		2014-15		2013-14		2012-13		2011-12		2010-11		2009-10	
	M	F	M	F	M	F	M	F	M	F	M	F	M	F
AmerNat			1	3	1	3	-	1	2	4	1	7	1	3
Asian			10	11	5	11	10	9	6	9	3	10	7	15
Black			123	304	116	328	134	385	139	405	143	403	131	421
Hispanic			31	51	25	42	23	36	18	31	18	34	11	28
White			246	346	225	378	240	491	261	502	283	547	299	516
Other/Unknown			1	4	3	3	2	7	1	3	6	6	4	10
Total (Gender)			412	719	375	767	409	929	427	954	454	1007	453	993
Annual Grand Total			1131		1142		1338		1381		1461		1446	

** Not available until 07/2016

Table 1.8

STUDENT TYPE

TYPE	Fall 2016	Fall 2015**	Fall 2014	Fall 2013	Fall 2012	Fall 2011	Fall 2010
Returning			562	626	681	721	705
New			248	192	265	250	300
Transfer			29	39	44	51	47
First Time in College			146	157	167	205	195
Military			79	77	84	25	29

** Available 01/2016

Table 1.9

DUAL ENROLLMENT: FALL SEMESTER

Fall 2016		Fall 2015		Fall 2014		Fall 2013		Fall 2012		Fall 2011		Fall 2010	
HC	%	HC	%	HC	%	HC	%	HC	%	HC	%	HC	%
		**	**	225	27	168	20	197	27	162	15.9	218	20.7

HC=Head Count

% = percentage of total enrollment for fall semester (unduplicated)

** Available 01/2016

Table 1.10

UNDUPLICATED DUAL ENROLLMENT BY HIGH SCHOOL: ANNUAL

HIGH SCHOOL	2015-16 **	2014-15	2013-14	2012-13	2011-12	2010-11	2009-010
Arcadia HS		105	54	77	127	100	71
Chincoteague HS		18	5	23	5	42	3
Nandua HS		92	74	75	78	65	77
Tangier Combined		-	3	-	8	0	4
Sub Total: ACCOMACK County		215	136	175	218	207	152
Northampton HS		38	34	36	41	42	38
Broadwater Academy (private)		39	37	42	80	82	76
GRAND TOTAL		292	207	253	339	331	266

** Available 07/2016

Table 1.11

FULL/PART TIME

STATUS	Fall 2016		Fall 2015		Fall 2014		Fall 2013		Fall 2012		Fall 2011		Fall 2010	
	HC	FTE	HC	FTE	HC	FTE	HC	FTE	HC	FTE	HC	FTE	HC	FTE
Full-Time					228	205	264	235	311	272	374	336	402	365
Part-Time					611	257	593	251	679	284	648	270	650	269
TOTAL					839	462	857	486	990	556	1022	606	1052	634

STATUS	Spring 2016		Spring 2015		Spring 2014		Spring 2013		Spring 2012		Spring 2011		Spring 2010	
	HC	FTE	HC	FTE	HC	FTE	HC	FTE	HC	FTE	HC	FTE	HC	FTE
Full-Time			200	183	245	224	294	272	339	308	391	354	384	348
Part-Time			665	273	607	242	703	281	652	264	680	271	672	274
TOTAL			865	456	852	466	997	553	991	572	1071	1026	1056	622

Table 1.12

DAY (< 5pm)/EVENING (5pm = or >) STATUS

STATUS	Fall 2016		Fall 2015		Fall 2014		Fall 2013		Fall 2012		Fall 2011		Fall 2010	
	N	%	N	%	N	%	N	%	N	%	N	%	N	%
DAY					782	94	823	96	950	96%	974	95%	970	92%
EVE.					46	5	31	4	38	4%	48	5%	82	8%
TOTAL					828	99	854	100	988	100%	1022	100%	1052	100%

STATUS	Spring 2016		Spring 2015		Spring 2014		Spring 2013		Spring 2012		Spring 2011		Spring 2010	
	N	%	N	%	N	%	N	%	N	%	N	%	N	%
DAY			841	97	823	97	964	97%	930	94%	1014	95%	1001	95%
EVE.			24	3	29	3	32	3%	61	6%	57	5%	55	5%
TOTAL			865	100	852	100	996	100%	991	100%	1071	100%	1056	100%

STATUS	Summer 2016		Summer 2015		Summer 2014		Summer 2013		Summer 2012		Summer 2011		Summer 2010	
	N	%	N	%	N	%	N	%	N	%	N	%	N	%
DAY			152	88	172	89	196	84	201	86%	250	86%	275	84%
EVE.			20	12	22	11	36	16	33	14%	42	14%	51	16%
TOTAL			172	100%	194	100%	232	100%	234	100%	292	100%	326	100%

Table 1.13

ENROLLMENT BY PROGRAM TYPE: CURRICULUM ENROLLMENT

(Prior to AY 2008-2009, CSC were recorded in aggregate)

Curriculum	Fall 2016		**Fall 2015		Fall 2014		Fall 2013		Fall 2012		Fall 2011		Fall 2010	
	HC	FTE	HC	FTE	HC	FTE	HC	FTE	HC	FTE	HC	FTE	HC	FTE
AA&S														
Business Admin 216					44	31	43	29	40	28	60	38	45	35
Education 624					32	21	29	18	40	25	40	28	36	27
General Studies 697					84	52	99	60	118	72	132	82	154	104
Liberal Arts 650					69	45	71	49	85	62	100	77	66	53
Science 881					108	69	131	79	110	66	126	77	139	83
Sub Total					337	218	373	235	393	254	458	304	440	302
AAS	HC	FTE	HC	FTE	HC	FTE	HC	FTE	HC	FTE	HC	FTE	HC	FTE
Info. Systems Tech. - 200					6	2	6	3	4	2	7	5	3	1
Management 212					32	18	40	25	33	21	34	22	42	29
Management-IST 212-01					See 212	-	See 212	-	-	-	See 212	-	See 212	See 212
Early Childhood Ed 636					37	19	55	32	65	37	57	35	44	31
Electronics Tech 981					21	14	18	12	33	20	26	18	22	17
Electronics-Computers 981-01					See 981	-	See 981	-	See 981		See 981	-	See 981	-
Sub Total					96	53	119	72	147	89	137	89	128	92

** Available 01/2016

Curriculum	Fall 2016		**Fall 2015		Fall 2014		Fall 2013		Fall 2012		Fall 2011		Fall 2010	
	HC	FTE	HC	FTE	HC	FTE	HC	FTE	HC	FTE	HC	FTE	HC	FTE
CERTIFICATES														
Electronics -925					5	4	4	3	2	1	1	0	3	2
Industrial Main.Tech -990					16	11	16	12	16	11	10	8	8	5
Medical Assisting -166					30	18	34	18	51	32	45	31	61	42
Practical Nursing -157					58	31	58	29	47	30	69	44	60	35
Welding- 995					16	8	18	12	11	6	11	7	15	8
Sub Total					122	72	130	74	135	86	155	103	167	159
CAREER STUDIES CERTIFICATES (CSC)	HC	FTE	HC	FTE	HC	FTE	HC	FTE	HC	FTE	HC	FTE	HC	FTE
Early Childhood Dev. 221-636-04					2	1	-	-	1	0	7	2	3	1
Electricity 221-941-01 (new 2014)					3	2	-	-	-	-	-	-	-	-
HVAC 221-903-10					9	5	7	3	8	3	18	7	16	6
Long-Term Care Assistant 221-157-01					16	7	13	4	12	5	15	6	10	4
Med. Admin. Office Specialist 221-285-87					-	-	2	1	5	3	4	2	-	-
Med. Code.&Bill Specialist 221-152-03					2	0	5	2	1	0	3	1	2	1
Small Business Manage. 221-212-24					1	0	1	1	1	1	1	1	1	1
Welding 221-995-01					4	2	10	6	8	4	4	3	3	1
Sub Total					37	18	39	18	40	19	54	24	38	15

** Available 01/2016

Graduates and Awards

Table 2.1

Annual Number of ESCC Awards

YEAR	AWARDS	DISTINCT GRADUATES
2015-2016		
2014-2015	133	110
2013-2014	148	116
2012-2013	182	148
2011-2012	203	167
2010-2011	157	136
2009-2010	144	136

Table 2.2

Distribution of Awards by Gender

GENDER	2015		2014		2013		2012		2011	
	N	%	N	%	N	%	N	%	N	%
MALE	35	26	45	30	38	21	60	30	57	36
FEMALE	98	74	103	70	144	79	143	70	100	64
TOTAL	133		148		182		203		157	

Table 2.3

Distribution of Awards by Ethnicity

Ethnicity	2015		2014		2013		2012		2011		2010	
	N	%	N	%	N	%	N	%	N	%	N	%
Am Indian	-	-	2	1	-	-	-	-	-	-	2	1
Asian	1	1	1	1	-	-	3	<1	-	-	1	1
Black	41	31	43	29	75	41	66	33	64	41	60	42
Hispanic	17	13	8	5	7	4	7	3	6	4	5	3
White	73	55	91	61	95	52	127	63	86	55	75	52
Other	1	1	3	3	3	2	-	-	1	1	-	-
Not Specified	-	-	-	-	2	1	-	-	-	-	1	1

Distribution of Awards by Age

Table 2.4 (age ranges beginning 2009)

AGE	2015		2014		2013		2012		2011		2010	
	Award	%	Award	%	Award	%	Award	%	Award	%	Award	%
18-19	9	7	2	1.4	1	.7	6	3	4	3	-	0
20-21	23	17	36	24	25	17	51	25	40	25	35	24
22-24	30	23	34	23	41	29	45	22	35	22	29	20
25-29	35	26	27	18	25	17	44	22	19	12	27	19
30-34	7	5	11	7	12	8	10	5	17	11	14	10
35-39	6	5	14	9	7	5	14	7	16	10	12	8
40-49	16	12	15	10	15	10	19	9	15	10	15	10
50-64	7	5	9	6	18	13	14	7	9	6	11	8
>=65	-	-	-	-	-	-	-	-	2	1	1	<1
TOTAL	133	97	148	98.4	144	99.7	203	100	157	100	144	100

* Because of rounding, not all tables add to 100%

AWARDS by CURRICULA

(Prior to AY 2008-2009, CSC were recorded in aggregate)

AA&S (TRANSFER)	2016	2015	2014	2013	2012	2011	2010
Business Admin 216		7	5	9	9	7	2
Education 624		9	4	6	2	4	7
General Education 695 (NOT A PROGRAM; AWARD ONLY)		23	38	33	58	23	-
General Studies 697		14	9	17	13	24	21
Gen.Studies Radiologic Tech MOU 697-09		1	3	2	3	1	-
Liberal Arts 650		4	13	10	6	2	-
Science 881		6	8	3	12	12	5
Sub Total		64	80	80	103	73	35

AAS (CAREER/TECH)	2016	2015	2014	2013	2012	2011	2010
Admin Support Technology 298 (discontinued 2014)	-	3	3	7	6	3	5
Management 212		3	2	5	4	2	2
Management-IST 212-01		2	-	2	2	5	5
Early Childhood Dev. 636		11	10	9	8	3	6
Electronics Tech 981		5	2	7	5	3	8
Electronics- Computers 981-01		2	2	1	1	2	1
<u>Sub Total</u>		26	19	31	26	18	27

CERTIFICATES	2016	2015	2014	2013	2012	2011	2010
Info. Systems Tech. - 200		-	1	2	1	1	2
CADD 727 (discontinued, 2013)		-	5	1	5	2	5
Clerical Studies 218 (discontinued, 2013)		2	-	-	1	-	1
Electronics - 925			-	2	-	4	-
Industrial Main.Tech - 990		2	2	-	-	-	-
Medical Assisting - 166		11	12	8	8	7	8
Practical Nursing - 157		13	11	16	14	15	25
Welding- 995		-	2	2	4	1	1
<u>Sub Total</u>		28	33	31	33	30	42

CAREER STUDIES CERTIFICATES (CSC)	2016	2015	2014	2013	2012	2011	2010
Banking 221-212-02 <i>(discontinued, 2012)</i>	-	-	-	-	-	-	3
CADD 221-729-01		-	1	-	-	1	-
Early Childhood Dev. 221-636-04		1	1	1	5	1	2
HVAC 221-903-10		3	4	9	7	9	8
Long-Term Care Assistant 221-157-01		6	1	11	12	6	7
Med. Admin. Office Specialist 221-285-87		1	3	13	7	2	4
Med. Code.&Bill Specialist 221-152-03		4	4	3	4	4	5
Small Business Manage. 221-212-24		-	1	-	2	1	1
Welding 221-995-01		-	1	3	4	5	10
Sub Total		15	16	40	41	29	40

The ESCC Fact Book is a work in progress; this is version 1.3.2015. In the coming months look for updated versions of this document on the ESCC web site or contact the Office of Research, Planning and Assessment at ESCC for additional information:

Judith M Grier
 Coordinator of Research, Planning and Assessment
 Eastern Shore Community College (ESCC)
 29300 Lankford Highway
 Melfa, VA 23410
 757.789.1753
jgrier@es.vccs.edu