

ESCC Fact Book

January 1

2013

A compilation of information about Eastern Shore Community College that includes institutional characteristics, trends in enrollment, graduate data, transfer data and other information that is deemed useful for planning.

**Resources/Information
for Planning**

Contents

GENERAL INFORMATION 3

Introduction 3

Mission, Goals, Vision and Values..... 3

The College..... 4

Accreditation..... 4

Service Region..... 4

Curriculum..... 5

Admission Requirements (General Admission)Curriculum 6

Student Enrollment..... 6

Graduates and Awards..... 16

GENERAL INFORMATION

Introduction

The purpose of this Fact Book is to provide accurate and timely information about Eastern Shore Community College (ESCC) institutional characteristics and trends in enrollment, graduation and transfer information, and other snapshots of information that are helpful and necessary for planning.

Mission, Goals, Vision and Values

A. ESCC Mission Statement

We serve the Eastern Shore of Virginia by meeting educational and training needs, creating an environment for student success, and preparing our students and ourselves for citizenship in a global society. By providing access to a broad range of academic, workforce development, and personal enrichment opportunities, we empower learners to improve the quality of life for themselves and their communities.

B. Our Goals:

1. To meet the educational and economic needs of our communities by providing access to responsive and affordable lifelong learning opportunities.
2. To promote and support student learning and success through exemplary instruction in a learning-centered environment.
3. To provide equitable access to learning resources and student support services for the college communities.
4. To offer students leadership opportunities and to prepare them for the challenges of an increasingly global economy and society.
5. To be a preeminent workforce development provider and to promote personal enrichment through continuing education.
6. To foster and advance significant and productive educational, economic, and cultural partnerships.
7. To provide the educational component of local economic and community development initiatives, in partnership with business and government agencies.
8. To recruit and develop well-qualified, dedicated, caring, and creative employees.

C. Our Vision:

To be an innovative, learning-centered community college recognized as a leader in education and as a vital link in the economic and cultural enrichment of our communities.

D. Our Values:

- Positive connections with the community.
- A supportive environment.
- Excellence in teaching and learning.
- The success of ESCC employees and students.

Approved by Eastern Shore Community College Board, 10/12/10

The College

Eastern Shore Community College (ESCC) is a member of the Virginia Community College System (VCCS) and serves the residents of Accomack and Northampton Counties as a two-year institution of higher education. Operating under policies established by the State Board for Community Colleges and the Eastern Shore Community College Board, the college is financed primarily with state funds, supplemented by contributions from the two counties and the Eastern Shore Community College Foundation.

ESCC is situated on a 115-acre site on U.S. Route 13, south of Melfa, in Accomack County Virginia. The facilities are accessible to the handicapped and include classrooms, laboratories, a bookstore, a lecture hall, administrative offices, a student lounge, and a Learning Resources Center/Library. The Business Development and Workforce Training Center opened in January, 2009 and houses Workforce Development Services including: occupational trade areas, allied health programs, industrial technology programs and employer training programs. The College is open year-round on a semester system. Classes are held from early morning through late evening, Monday – Saturday.

Accreditation

Eastern Shore Community College is accredited by the Commission on Colleges of the Southern Association of Colleges and Schools to award the associate degree. Contact the Commission on Colleges (1866 Southern Lane, Decatur, GA 30033-4097 or call 404.679.4500) for questions about the accreditation of ESCC.

The associate degree curricula of the College have also been approved by the State Council of Higher Education for Virginia. The Nursing Program (in cooperation with Tidewater Community College) is fully accredited by the National League of Nursing and approved by the Virginia Board of Nursing. The National League for Nursing Accreditation Commission (350 Hudson Street, New York, NY; 800.669.1656) may be used as a resource for program information. The Practical Nursing certificate program and the Long-Term Care Assistant (LTCA) career studies certificate program are accredited by the Virginia Board of Nursing.

All degree and certificate programs offered at the College are approved by the State Department of Education for the payment of veterans' educational benefits.

Service Region

Eastern Shore Community College serves the residents of Accomack and Northampton Counties as a two-year institution of higher learning.

ESCC Service Area Demographics (*2010 Census data)

Population (2010 U.S. Census Bureau): 45, 553
 Accomack County: 33,164
 Northampton County: 12,389

	<u>Accomack County</u>	<u>Northampton County</u>
Female	51%	52%
Male	49%	48%
Black	28%	37%
Hispanic	9%	7%
White	65%	58%
High School Grad	76%	79%
Bachelor’s Degree	18%	19%
Median Age	39.9 years	41.6 years
Per Capita Income	\$22,013	\$21, 872
Below Poverty Level	18%	21%
Unemployment Rate	7.2%	8.1%

College Participation Rates by County

Semester	Accomack County	Northampton County
Fall 2012	1005 (73%)	316 (23%)
Fall 2011	742 (73%)	244 (24%)
Fall 2010	780 (74%)	241 (23%)
Fall 2009	722 (73%)	230 (23%)
Fall 2008	665 (70%)	242 (26%)
Fall 2007	657 (72%)	218 (24%)
Fall 2006	601 (72%)	214 (26%)
Fall 2005	559 (73%)	199 (26%)
Fall 2004	771 (76%)	220 (22%)
Fall 2003	579 (72%)	212 (26%)
Fall 2002	653 (74%)	214 (24%)
Fall 2001	672 (74%)	214 (24%)

*students from outside of Accomack and Northampton Counties are not represented in the above table

Curriculum

Eastern Shore Community College offers associate degree programs, certificate programs and career study certificate programs. Currently, there are (7) associate of applied science degrees (AAS), (6) associate of arts and sciences degrees (AA&S), these degrees are commonly referred to as the “transfer degree” programs, (8) certificate programs and (11) career studies certificate programs (CSC) from which to choose a field of study. Additionally, high school students who are college-bound may enroll in selected courses for college credit; this category is known as dual enrollment.

In fall, 2011, there were 1,022 students enrolled at ESCC. Of that total, 458 were enrolled in transfer programs (AA&S), 130 were enrolled in Career and Technical programs (AAS), 162 students were enrolled in the certificate programs, and 54 in the career studies certificate programs (CSC). Additionally, there were 139 high school students (unduplicated) enrolled in the dual enrollment program. Not all ESCC students are enrolled in credentialed programs but rather for personal or professional enrichment; 218 students were enrolled as “unclassified” in fall, 2011.

Admission Requirements (General Admission)

Individuals are eligible for admission to ESCC if they are high school graduates or the equivalent (GED), or if they are eighteen years of age or older and able to benefit from study at the College. Information and specifics related to “curricular admission”, “non-curricular admission” and “admissions with special provisions” may be found in the ESCC Catalog & Student Handbook or online at www.es.vccs.edu.

Student Enrollment

Table 1.1

ANNUAL UNDUPLICATED HEADCOUNT and FTES

Academic Year	Unduplicated Headcount	Annual FTES
2011-2012	1,381	640
2010-2011	1,461	688
2009-2010	1,446	662
2008-2009	1,332	577
2007-2008	1,215	542
2006-2007	1,106	486
2005-2006	1,103	444
2004-2005	1,306	491
2003-2004	1146	469
2002-2003	1,264	506
2001-2002	1,324	466
2000-2001	1,096	440

ANNUAL STUDENT HEADCOUNT and FTES

Figure 1.1a

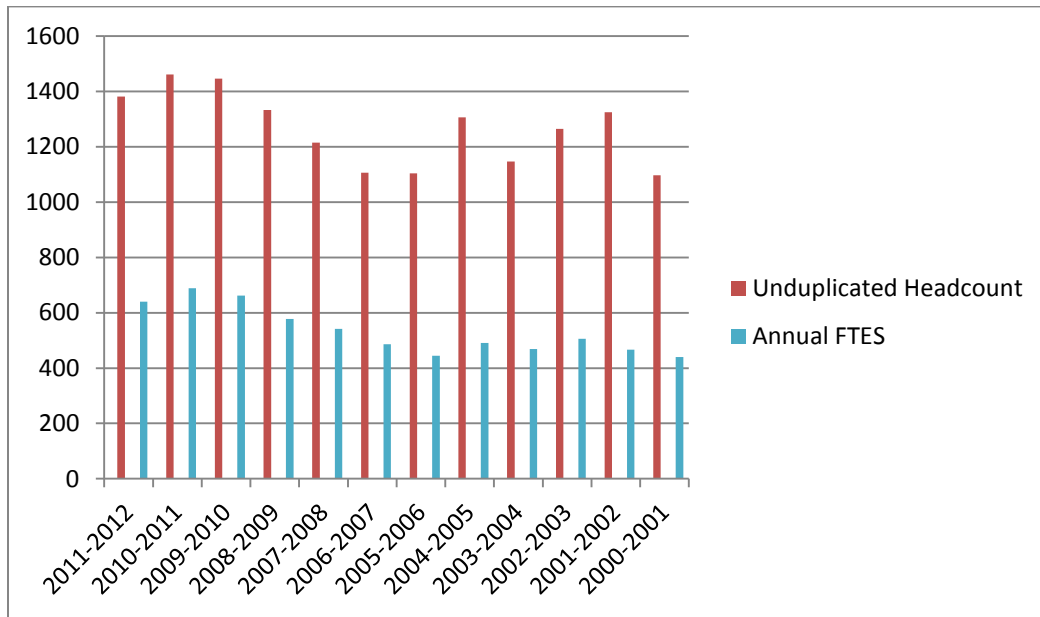


Figure 1.1b

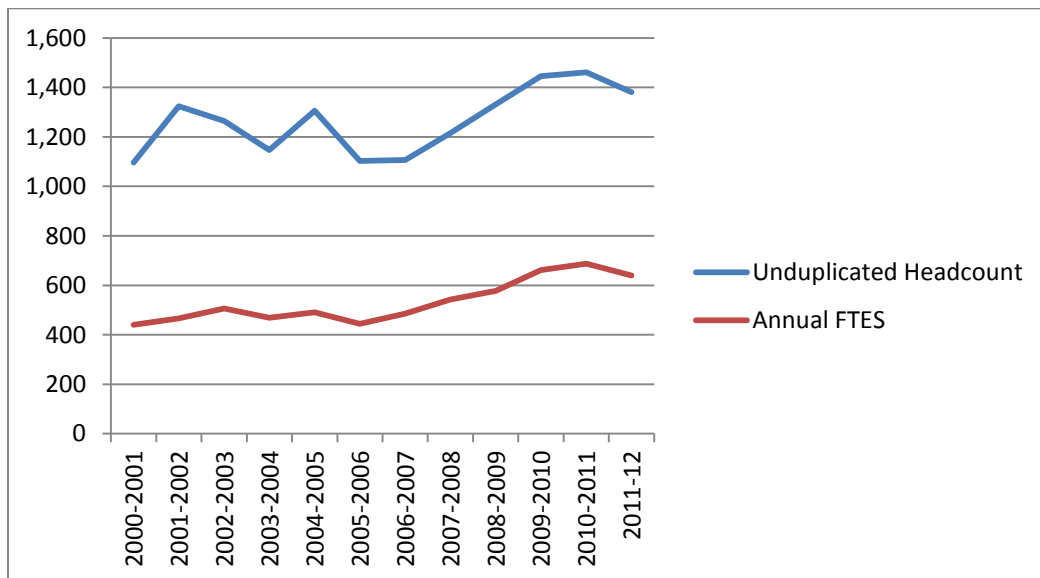


Table 1.2

STUDENT HEADCOUNT (HC) and FTEs (FTE) BY SEMESTER

Year	SUMMER		FALL		SPRING		ANNUAL TOTALS	
	HC	FTE	HC	FTE	HC	FTE	HC	FTE
2012-2013	234	73	990	556	*	*	*	*
2011-2012	292	101	1022	606	991	572	1381	640
2010-2011	326	116	1052	634	1071	625	1461	688
2009-2010	343	118	987	585	1056	621	1446	662
2008-2009	236	92	939	521	978	541	1332	577
2007-2008	275	59	907	347	862	485	1215	542
2006-2007	202	37	835	378	793	435	1106	486

*Not yet available, 01/2013

** Because of rounding, not all tables add to 100%

Figure 1.2

STUDENT HEADCOUNT (HC) and FTEs (FTE) BY SEMESTER

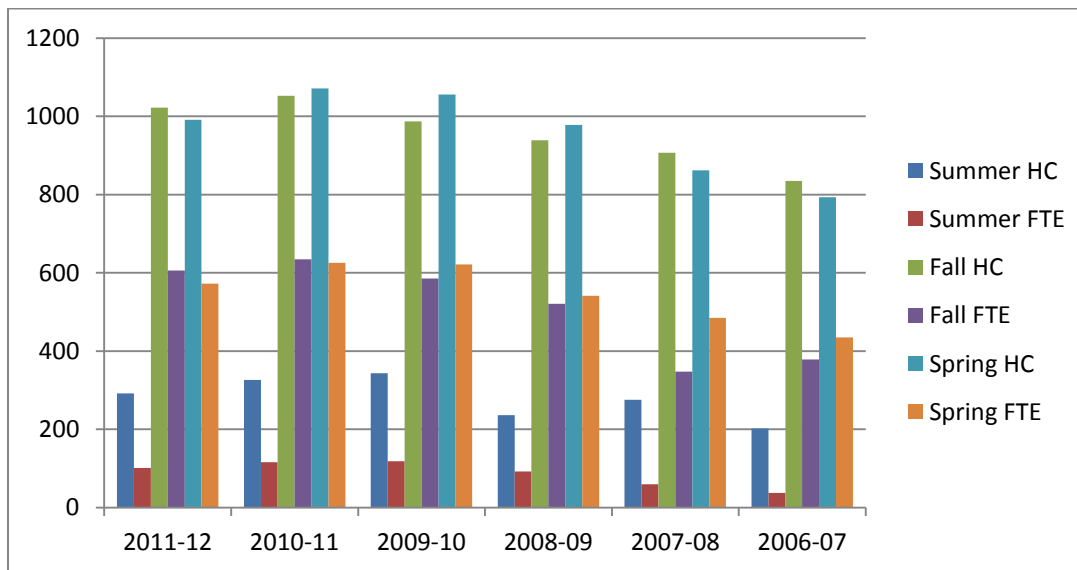


Table 1.3

AVERAGE CREDIT HOUR LOAD: FALL SEMESTERS

CREDITS	HEADCOUNT										Total	Average Credits
	1-4		5-8		9-11		12-18		19 &>			
	HC	%	HC	%	HC	%	HC	%	HC	%		
Fall 2012	223	23	289	29	167	17	311	31	0	0	990	8.4
Fall 2011	210	21	283	28	155	15	374	37	0	0	1022	8.9
Fall 2010	233	22	269	26	148	14	399	38	3	0	1052	9.0
Fall 2009	202	20	265	27	169	17	348	35	3	0	987	8.9
Fall 2008	231	25	288	31	139	15	280	30	1	0	939	8.3

Table 1.4

FULL-TIME and PART-TIME ANNUAL HEADCOUNT AND FTEs

YEAR	Full-Time				Part-Time				Annual Totals	
	HC	%	FTE	%	HC	%	FTE	%	HC	FTE
2012-13										
2011-12	300	21	281	44	1081	79	358	56	1381	640
2010-11	308	21	296	43	1153	79	398	57	1461	688
2009-10	314	22	296	45	1132	78	367	55	1446	662
2008-09	229	17	215	37	1103	83	362	63	1332	577
2007-08	232	19	220	41	983	81	322	59	1215	542

*Because of rounding, not all tables add to 100%

Table 1.5

AGE DISTRIBUTION

Age	2011-2012		2010-2011		2009-2010		2008-2009		2007-2008	
	HC	%	HC	%	HC	%	HC	%	HC	%
<=17	196	14	233	16	205	14	220	17	209	17
18-19	293	21	308	21	313	22	292	22	245	20
20-21	185	13	183	13	194	13	153	11	149	12
22-24	156	11	148	10	162	11	139	10	122	10
25-29	168	12	159	11	162	11	149	11	134	11
30-34	99	7	109	7	103	7	97	7	90	7
35-39	85	6	99	7	87	6	75	6	76	6
40-49	108	8	117	8	125	9	128	10	117	10
50-64	84	6	97	7	91	6	72	5	68	6
>=65	7	5	8	1	4	0	7	1	5	0
Total Annual Headcount	1381		1461		1446		1332		1215	

** Because of rounding, not all tables add to 100%

Table 1.6

GENDER DISTRIBUTION

Sex	2011-12		2010-11		2009-10		2008-09		2007-08	
	HC	%	HC	%	HC	%	HC	%	HC	%
MALE	427	31	454	31	453	31	434	33	337	31
FEMALE	954	69	1007	69	993	69	898	67	838	69
Total	1381	100	1461	100	1446	100	1332	100	1215	100

** Because of rounding, not all tables add to 100%

Table 1.7

ETHNIC DISTRIBUTION

Race	2011-12		2010-11		2009-10		2008-09		2007-08		Total (ethnicity)
	M	F	M	F	M	F	M	F	M	F	
AmerNat	2	4	1	7	1	3	2	7	2	3	32
Asian	6	9	3	10	7	15	5	12	2	6	75
Black	139	405	143	403	131	421	117	365	97	390	2611
Hispanic	18	31	18	34	11	28	16	29	20	22	227
White	261	502	283	547	299	516	288	478	252	408	3834
Other/Unknown	1	3	6	6	4	10	6	7	4	9	56
Total (Gender)	427	954	454	1007	453	993	434	898	337	838	
Annual Grand Total	1381		1461		1446		1332		1215		

Table 1.8

STUDENT TYPE

TYPE	Fall 2012	Fall 2011	Fall 2010	Fall 2009	Fall 2008
Returning	681	721	705	718	589
New	265	250	300	215	314
Transfer	44	51	47	54	36
First Time in College	167	205	195	186	208
Veteran	84	25	29	15	16

Table 1.9

DUAL ENROLLMENT: FALL SEMESTER

Fall 2012		Fall 2011		Fall 2010		Fall 2009		Fall 2008		Fall 2007	
HC	%	HC	%	HC	%	HC	%	HC	%	HC	%
197	27	162	15.9	218	20.7	161	16.3	220	23.4	172	19

HC=Head Count

% = percentage of total enrollment for fall semester (unduplicated)

Table 1.10

UNDUPLICATED DUAL ENROLLMENT BY HIGH SCHOOL: ANNUAL

HIGH SCHOOL	2012-13	2011-12	2010-11	2009-010	2008-09	2007-08
Arcadia HS		127	100	71	37	62
Chincoteague HS		5	42	3	20	25
Nandua HS		78	65	77	9	56
Tangier Combined		8	0	4	0	0
Sub Total: ACCOMACK County		218	207	152	66	143
Northampton HS		41	42	38	80	56
Broadwater Academy (private)		80	82	76	59	0
GRAND TOTAL		339	331	266	205	199

Table 1.11

FULL/PART TIME

STATUS	Fall 2012		Fall 2011		Fall 2010		Fall 2009		Fall 2008		Fall 2007	
	HC	FTE	HC	FTE	HC	FTE	HC	FTE	HC	FTE	HC	FTE
Full-Time	311	272	374	336	402	365	351	317	281	252	298	271
Part-Time	679	284	648	270	650	269	636	268	658	269	609	247
TOTAL	990	556	1022	606	1052	634	987	585	939	521	907	518

STATUS	Spring 2012		Spring 2011		Spring 2010		Spring 2009		Spring 2008		Spring 2007	
	HC	FTE	HC	FTE	HC	FTE	HC	FTE	HC	FTE	HC	FTE
Full-Time	339	308	391	354	384	348	315	283	265	245	233	211
Part-Time	652	264	680	271	672	274	663	258	597	240	560	225
TOTAL	991	572	1071	1026	1056	622	978	541	862	485	793	436

Table 1.12

DAY (< 5pm)/EVENING (5pm = or >) STATUS

STATUS	Fall 2012		Fall 2011		Fall 2010		Fall 2009		Fall 2008		Fall 2007	
	N	%	N	%	N	%	N	%	N	%	N	%
DAY	950	96%	974	95%	970	92%	934	95%	779	83%	848	93%
EVE.	38	4%	48	5%	82	8%	53	5%	160	17%	59	7%
TOTAL	988	100%	1022	100%	1052	100%	987	100%	939	100%	907	100%

STATUS	Spring 2012		Spring 2011		Spring 2010		Spring 2009		Spring 2008		Spring 2007	
	N	%	N	%	N	%	N	%	N	%	N	%
DAY	930	94%	1014	95%	1001	95%	809	83%	809	94%	716	90%
EVE.	61	6%	57	5%	55	5%	169	17%	53	6%	77	10%
TOTAL	991	100%	1071	100%	1056	100%	978	100%	862	100%	793	100%

STATUS	Summer 2012		Summer 2011		Summer 2010		Summer 2009		Summer 2008		Summer 2007	
	N	%	N	%	N	%	N	%	N	%	N	%
DAY	201	86%	250	86%	275	84%	209	61%	238	80%	207	75%
EVE.	33	14%	42	14%	51	16%	134	39%	61	20%	70	25%
TOTAL	234	100%	292	100%	326	100%	343	100%	299	100%	277	100%

Table 1.13

ENROLLMENT BY PROGRAM TYPE: CURRICULUM ENROLLMENT

(Prior to AY 2008-2009, CSC were recorded in aggregate)

Curriculum	Fall 2012		Fall 2011		Fall 2010		Fall 2009		Fall 2008		Fall 2007	
AA&S	HC	FTE	HC	FTE	HC	FTE	HC	FTE	HC	FTE	HC	FTE
Business Admin 216	40	28	60	38	45	35	36	27	25	19	30	22
Education 624	40	25	40	28	36	27	39	27	39	26	42	26
General Studies 697	118	72	132	82	154	104	173	127	154	106	114	82
Gen.Studies Radiologic Tech 697-09	-	-	-	-	-	-	-	-	-	-	-	-
Liberal Arts 650	85	62	100	77	66	53	1	0	-	-		
Science 881	110	66	126	77	139	83	118	73	97	57	120	68
Sub Total	393	254	458	304	440	302	367	255	315	208	306	198
AAS	HC	FTE	HC	FTE	HC	FTE	HC	FTE	HC	FTE	HC	FTE
Admin. Support Tech 298	16	11	13	9	14	12	14	8	13	7	22	16
Info. Systems Tech. - 200	4	2	7	5	3	1	8	5	13	7	13	7
Management 212	33	21	34	22	42	29	36	23	44	28	53	33
Management-IST 212-01	-	-	See 212	-	See 212	See 212	-	-	See 212	-	See 212	-
Radiography 172	-	-	-	-	3	2	24	14	7	5	-	-
Early Childhood Ed 636	65	37	57	35	44	31	35	23	30	20	27	17
Electronics Tech 981	33	20	26	18	22	17	26	21	18	11	28	19
Electronics-Computers 981-01	See 981		See 981	-	See 981	-	See 981	-	See 981	-	See 981	See 981
Sub Total	147	89	137	89	128	92	143	94	125	78	143	92

Curriculum	Fall 2012		Fall 2011		Fall 2010		Fall 2009		Fall 2008		Fall 2007	
	HC	FTE	HC	FTE	HC	FTE	HC	FTE	HC	FTE	HC	FTE
CERTIFICATES												
Admin. Assistant/Clerical Studies- 218	3	2	11	7	12	9	12	9	7	5	7	4
CADD - 727	5	4	7	5	8	5	10	8	16	12	11	7
General Education - 695	-	-	1	0	-	-	2	2	1	1		
Electronics - 925	2	1	1	0	3	2	4	2	1	0	4	1
Industrial Main.Tech - 990	16	11	10	8	8	5	-	-	-	-		
Medical Assisting - 166	51	32	45	31	61	42	53	38	29	23	30	17
Practical Nursing - 157	47	30	69	44	60	35	71	43	97	55	83	56
Welding- 995	11	6	11	7	15	8	7	4	4	2	2	1
Sub Total	135	86	155	103	167	159	159	106	155	98	137	86
CAREER STUDIES CERTIFICATES (CSC)	HC	FTE	HC	FTE	HC	FTE	HC	FTE	HC	FTE	HC	FTE
Banking 221-212-02	-	-	-	-	-	-	2	1			See sub-total	See sub-total
CADD 221-729-01	4	3	2	2	3	1	1	0	5	4		
Early Childhood Dev. 221-636-04	1	0	7	2	3	1	7	2	-	-		
HVAC 221-903-10	8	3	18	7	16	6	7	3	-	-		
Long-Term Care Assistant 221-157-01	12	5	15	6	10	4	10	4	19	7		
Med. Admin. Office Specialist 221-285-87	5	3	4	2	-	-	1	1	1	0		
Med. Code.&Bill Specialist 221-152-03	1	0	3	1	2	1	3	0	-	-		
Small Business Manage. 221-212-24	1	1	1	1	1	1	2	1	-	-		
Welding 221-995-01	8	4	4	3	3	1	11	5	9	4		
Sub Total	40	19	54	24	38	15	44	17	34	15	44	17

Graduates and Awards

Table 2.1

Annual Number of ESCC Awards

YEAR	AWARDS
2011-2012	203
2010-2011	157
2009-2010	144
2008-2009	127
2007-2008	117
2006-2007	96

Table 2.2

Gender Distribution of Graduates by Awards

GENDER	2012		2011		2010		2009		2008		2007	
	n	%	n	%	n	%	n	%	n	%	n	%
MALE	60	30	57	36	51	35	32	25	20	17	21	22
FEMALE	143	70	100	64	93	65	95	75	96	83	75	78
TOTAL	203		157		144		127		117		96	

Table 2.3

Ethnic Distribution of Graduates by Awards

Ethnicity	2012		2011		2010		2009		2008		2007	
	n	%	n	%	n	%	n	%	n	%	n	%
Am Indian	-	-	-	-	2	1	-	-	-	-	-	-
Asian	3	<1	-	-	1	1	2	2	1	1	1	1
Black	66	33	64	41	60	42	54	43	70	60	42	44
Hispanic	7	3	6	4	5	3	4	3	1	1	1	1
White	127	63	86	55	75	52	66	52	44	38	52	54
Other	-	-	1	1	-	-	-	-	-	-	-	-
Not Specified	-	-	-	-	1	1	1	1	-	-	-	-

Age Distribution of Graduates by Awards

Table 2.4 (age ranges beginning 2009)

AGE	2012		2011		2010		2009	
	Award	%	Award	%	Award	%	Award	%
18-19	6	3	4	3	-	0	8	6
20-21	51	25	40	25	35	24	20	16
22-24	45	22	35	22	29	20	37	29
25-29	44	22	19	12	27	19	23	18
30-34	10	5	17	11	14	10	5	4
35-39	14	7	16	10	12	8	11	9
40-49	19	9	15	10	15	10	15	12
50-64	14	7	9	6	11	8	8	6
>=65	-	-	2	1	1	<1	-	0
TOTAL	203	100	157	100	144	100	127	100

Table 2.5 (age ranges prior to 2009)

AGE	2008		2007	
	Award	%	Award	%
<18	0	0	0	0
18-21	29	25	24	25
22-24	28	24	16	17
25-34	32	27	27	28
35-44	16	14	17	18
45-59	10	9	10	10
60+	2	2	2	2
TOTAL	117	100	96	100

AWARDS by CURRICULA

(Prior to AY 2008-2009, CSC were recorded in aggregate)

AA&S (TRANSFER)	2012	2011	2010	2009	2008	2007
Business Admin 216	9	7	2	1	-	3
Education 624	2	4	7	7	6	7
General Education 695	58	23	-	-	-	-
General Studies 697	13	24	21	28	15	16
Gen.Studies Radiologic Tech 697-09	3	1	-	-	-	-
Liberal Arts 650	6	2	-	-	-	-
Science 881	12	12	5	9	6	6
<u>Sub Total</u>	103	73	35	45	27	32
AAS (CAREER/TECH)						
Admin. Support Tech 298	6	3	5	4	5	5
Management 212	4	2	2	3	9	2
Management-IST 212-01	2	5	5	4	-	-
Radiography 172	-	7	-	-	-	-
Early Childhood Dev. 636	8	3	6	8	-	-
Electronics Tech 981	5	3	8	1	5	6
Electronics- Computers 981-01	1	2	1	-	-	-
<u>Sub Total</u>	26	25	27	20	19	13

CERTIFICATES	2012	2011	2010	2009	2008	2007
Admin. Assistant/Clerical Studies- 218	1	-	1	3	2	-
Info. Systems Tech. - 200	1	1	2	1	-	-
CADD - 727	5	2	5	4	2	2
Electronics - 925	-	4	-	1	-	-
Industrial Main.Tech - 990	-	-	-	-	-	-
Medical Assisting - 166	8	7	8	10	6	5
Practical Nursing - 157	14	15	25	9	22	-
Welding- 995	4	1	1	1	-	-
Sub Total	33	30	42	29	32	7
CAREER STUDIES CERTIFICATES (CSC)					Not disaggregated	Not disaggregated
Banking 221-212-02	-	-	3	-		
CADD 221-729-01	-	1	-	-		
Early Childhood Dev. 221-636-04	5	1	2	2		
HVAC 221-903-10	7	9	8	1		
Long-Term Care Assistant 221-157-01	12	6	7	19		
Med. Admin. Office Specialist 221-285-87	7	2	4	1		
Med. Code.&Bill Specialist 221-152-03	4	4	5	5		
Small Business Manage. 221-212-24	2	1	1	-		
Welding 221-995-01	4	5	10	5		
Sub Total	41	29	40	33	39	44

The ESCC Fact Book is a work in progress; this is version 1.2. In the coming months look for updated versions of this document on the ESCC web site or contact the Office of Research, Planning and Assessment at ESCC for additional information:

Judith M Grier
Coordinator of Research, Planning and Assessment
Eastern Shore Community College (ESCC)
29300 Lankford Highway
Melfa, VA 23410
757.789.1753
jgrier@es.vccs.edu